






3/90-92 Wardell Road EARLWOOD, NSW

2

2

1

### Quality and convenience

Situated in a very Well-maintained complex, this bright and spacious townhouse is immaculately presented throughout with a low maintenance private garden court yard, front facing balcony and secure remote lock up garage.

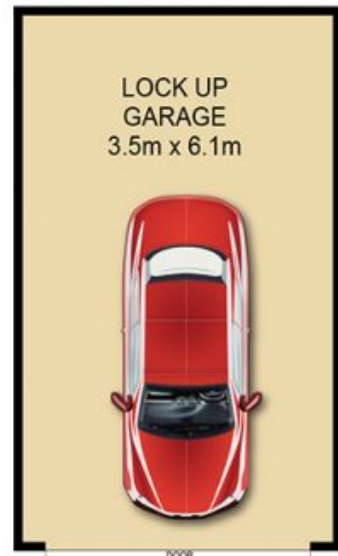
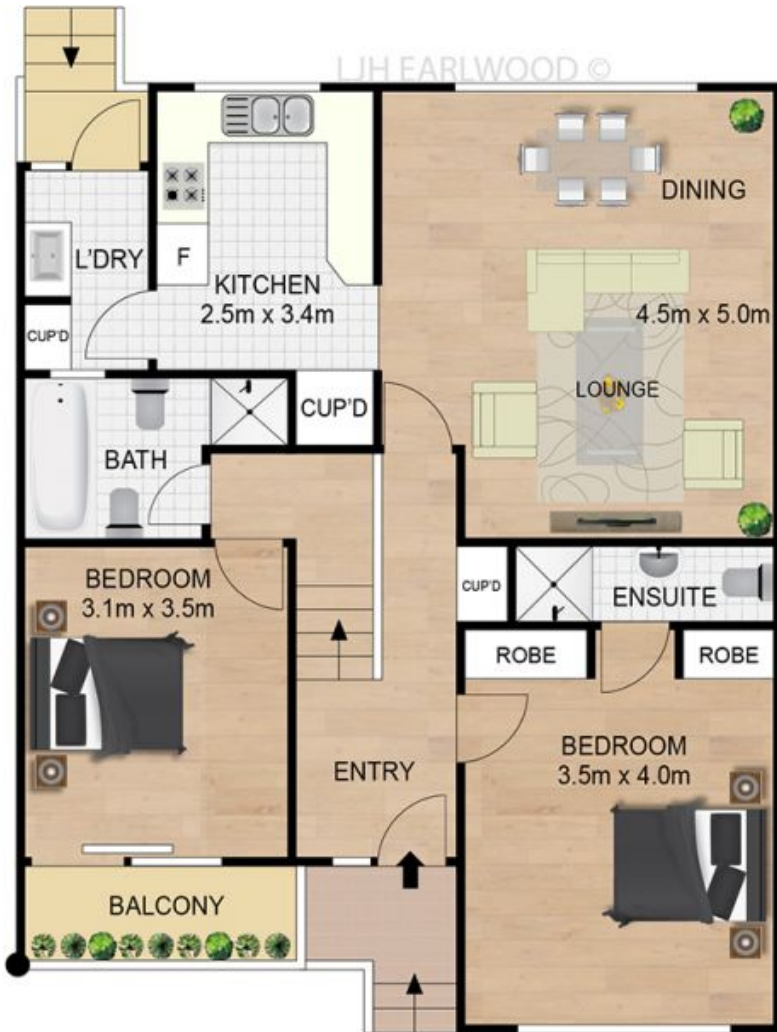
Price:

Contact Agent



**George Karafotias**

0405 436 336



All stated dimensions are approximate only. Particulars given are for general information and do not constitute any representation on the part of the vendor or agent. COPYRIGHT © PROPERTY MARKETING AUSTRALIA PTY. LTD. [www.propertymarketingaustralia.com.au](http://www.propertymarketingaustralia.com.au)

3/90-92 WARDELL AVENUE

EARLWOOD