



135 Kingsgrove Road KINGSGROVE, NSW

3 

2 

2 

Character Home with Excellent Potential

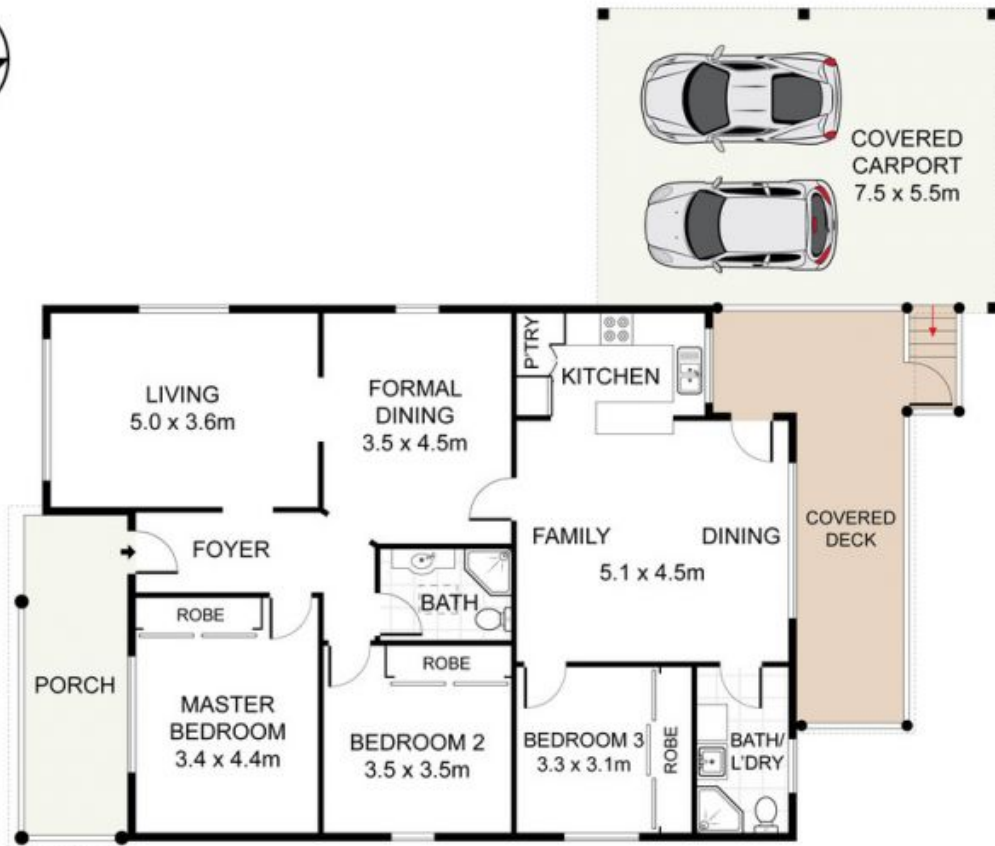
Price: \$1,150,000

This well-appointed Double brick family home offers that sought after combination of immediate comfort with potential to evolve.

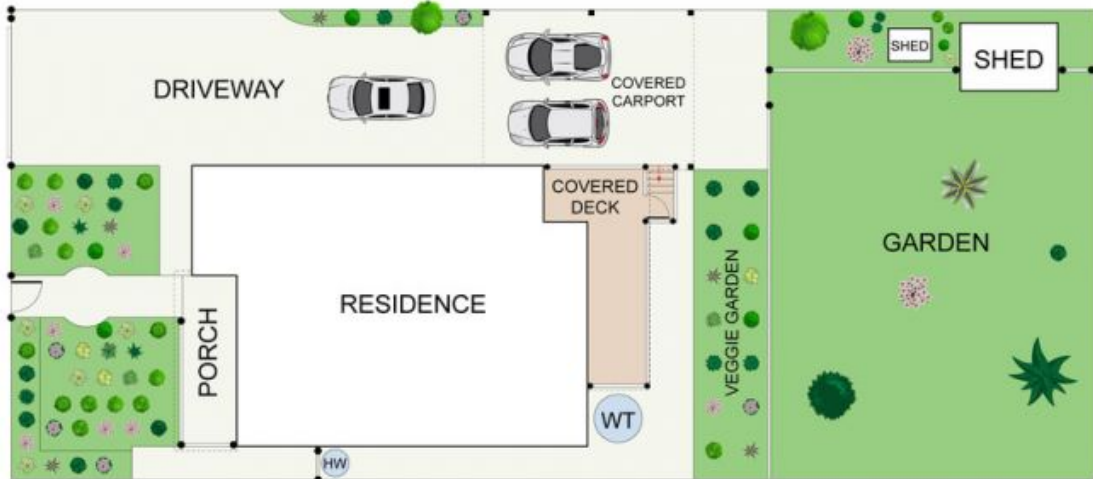


George Karafotias

0405 436 336



GROUND FLOOR



SITE PLAN (NOT TO SCALE)

LJ Hooker Earlowood

135 Kingsgrove Road, Kingsgrove

DISCLAIMER: PLANS SHOWN ARE FOR PRESENTATION PURPOSES AND ARE NOT PART OF ANY LEGAL DOCUMENT. ALL MEASUREMENTS AND FIGURES ARE APPROXIMATE.