



208/10 West Promenade Manly, NSW

2  2  1 

Generous sized apartment with private courtyard in the heart of Manly

This well-presented apartment offers an expansive floor plan with a large open plan living area, separate study space and a private courtyard perfect for entertaining. Located within a short walking distance to Manly's shops, cafes and wharf.

Price: HOLDING FEE RECEIVED pw
Available Date: 03/06/2021



Abbey Robotham

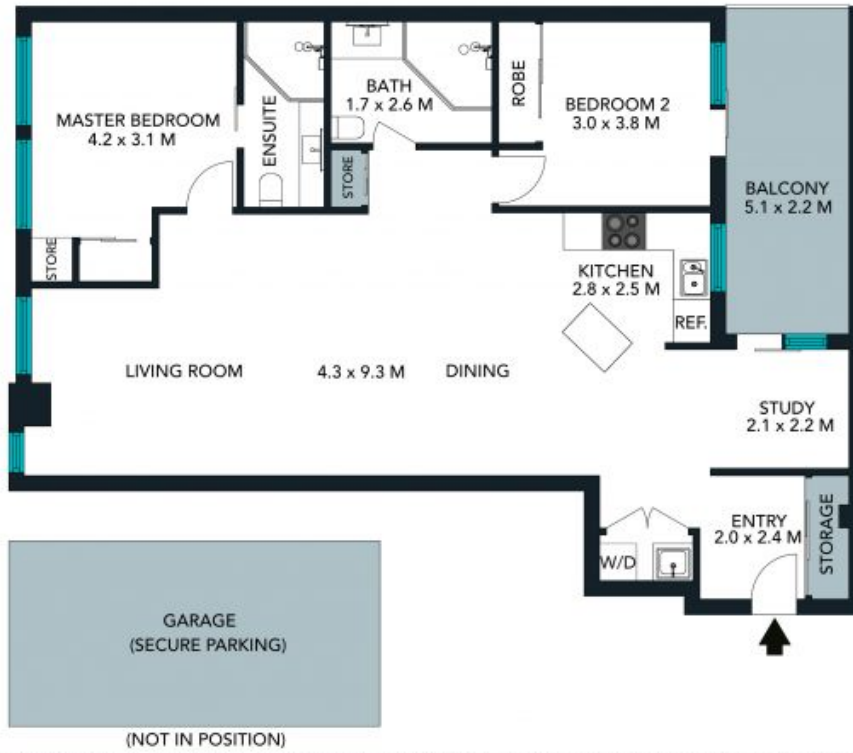
02 8962 2200



The floor plan is not to scale, measurements are indicative and in metres. All features included in this 3D plan are for inspiration purposes only. This is not an exact replica of the property or the position of exterior elements. Plans should not be relied on. Interested parties should make and rely on their own enquiries.

208/10 west promenade, manly





The floor plan is not to scale, measurements are indicative and in metres. Colour elements are not to position. Plans should not be relied on. Interested parties should make and rely on their own enquiries. All other information provided has been collected from reliable sources but cannot be guaranteed for accuracy.

208/10 West Promenade, Manly

