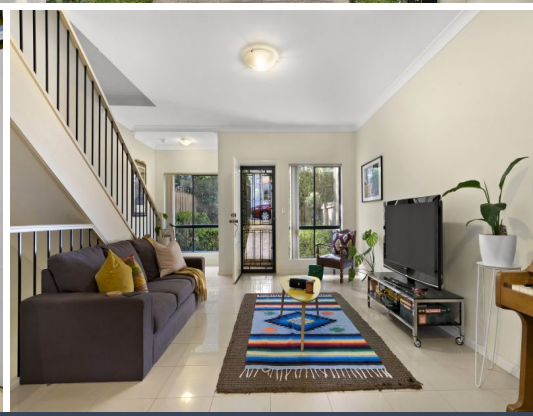
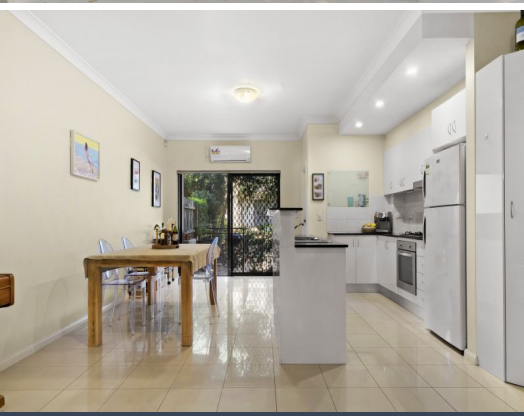


STONE



4/8-16 Virginia Street Rosehill, NSW      3      2      1

### Modern & Spacious Townhouse

This refined terrace home offers modern interiors and an intelligent configuration that is spread over four well considered levels. Located in the tree lined Virginia Street you will find yourself quietly positioned amidst parks, schools and efficient transport.

Price: \$775,000 - \$815,000



**Aaron Lih**  
0420 825 598



**Adam Denina**  
0413 546 713



GROUND FLOOR



1ST FLOOR



2ND FLOOR



BASEMENT FLOOR

The floor plan is not to scale, measurements are indicative and in metres. Colour statements are not to position. Plans should not be relied on, interested parties should make and rely on their own enquiries. All other information provided has been collected from reliable sources but cannot be guaranteed for accuracy.

4/8-16 Virginia Street, Rosehill

STONE





GROUND FLOOR



1ST FLOOR



2ND FLOOR



BASEMENT FLOOR

The floor plan is not to scale, measurements are indicative and in metres. All features included in this 3D plan are for inspiration purposes only. This is not an exact replica of the property or the position of exterior elements. Plans should not be relied on. Interested parties should make and rely on their own enquiries.



4/8-16 Virginia Street, Rosehill

