



27/26-30 Marian Street Killara, NSW



### Sunny lifestyle apartment in premier east side

Set in a contemporary full-brick development in one of Killara's finest blue-ribbon addresses, just a leisurely stroll to caf?, parks and rail, this one-bedroom residence offers executive apartment living at its best. A sophisticated light-filled living space, it features effortlessly stylish interiors and inviting alfresco entertaining drenched in north-easterly sun.

**Council Rates:** \$334.00 p/q

**Water Rates:** \$146.00 p/q

**Strata Rates:** \$824.77 p/q



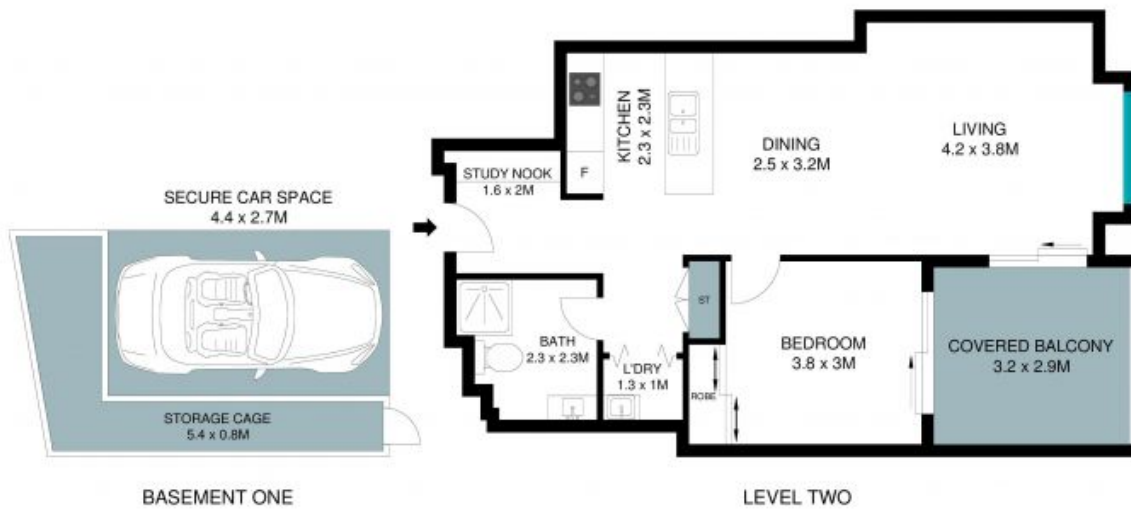
**Matt Payne**

0435 825 242



**Ryan Woo**

0410 884 680



The site plan and floor plan are not to scale; measurements are indicative in meters. Gardens and trees are placed for illustration purposes. Plans should not be relied on. Interested parties should make and rely on their own inquiries. All other information provided has been collected from reliable sources but cannot be guaranteed for accuracy.

27/26-30 Marian Street, Killara





BASEMENT ONE

LEVEL TWO



The site plan and floor plan are not to scale, measurements are indicative in nature. Bathing and trees are placed for illustration purposes. Plans should not be relied on, interested parties should make and rely on their own inquiries. All other information provided has been collected from reliable sources but cannot be guaranteed for accuracy.

27/26-30 Marian Street, Killara

