

STONE



138 Tait Avenue Kanahooka, NSW

3 

2 

2 

Pristine home capturing beautiful outlooks

Immaculately maintained with as-new finishes throughout, this original brick and tile home complements its freshly presented interiors with tantalising water views stretching to Lake Illawarra. It's spread across a 556sqm block of land, appealing to families, downsizers and first homebuyers with its proximity to foreshore parks, local schools and local array of shopping and lifestyle options.

- Good sized living room plus a family area which opens to the outdoors
- Enormous upper level deck and ground floor patio perfect for entertaining
- Large in-ground pool amidst the tiered yard and easycare landscaped gardens
- Stone gas kitchen has high quality appliances, ample cabinetry and scenic views
- Accommodation of three bedrooms, including two fitted with built-in wardrobes
- Main bathroom showcasing frameless glass shower and designer soaking tub
- Wide hallways, air conditioning, tiled and polished timber floors throughout
- Ample storage, oversized double garage, sunny north east facing front lawn

Council rates \$462.24pq approx.

Water rates \$172.04pq approx.

Price:

\$875,013



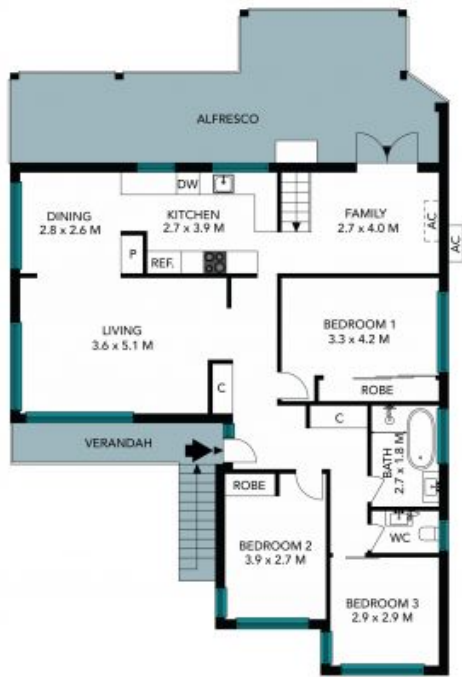
Neil Webster

0439 028 748

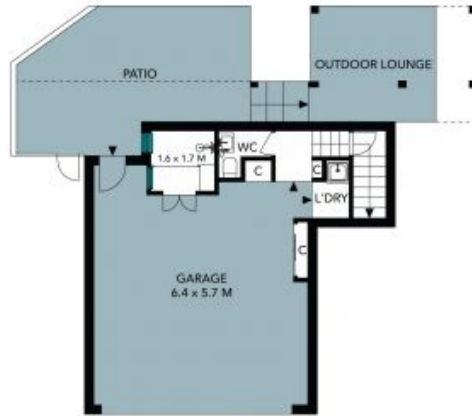


Yenson Mui

0421 882 541



GROUND FLOOR



LOWER GROUND FLOOR



SITE PLAN



The site plan and floor plan are not to scale, measurements are indicative and in metres. Shades and trees are placed for illustration purposes. Plans should not be relied on. Interested parties should make and rely on their own enquiries. All other information provided has been collected from reliable sources but cannot be guaranteed for accuracy.

138 Tait Avenue, Kanahooka

STONE



GROUND FLOOR



LOWER GROUND FLOOR

The floor plan is not to scale, measurements are indicative and in metres. All features included in this 2D plan are for inspiration purposes only. This is not an exact replica of the property or the position of exterior elements. Plans should not be relied on. Interested parties should make and rely on their own enquiries.

138 Tait Avenue, Kanahooka

