



305c/3-7 Lorne Avenue Killara, NSW

2 

1 

1 

### Enviably modern living with walk-rail convenience

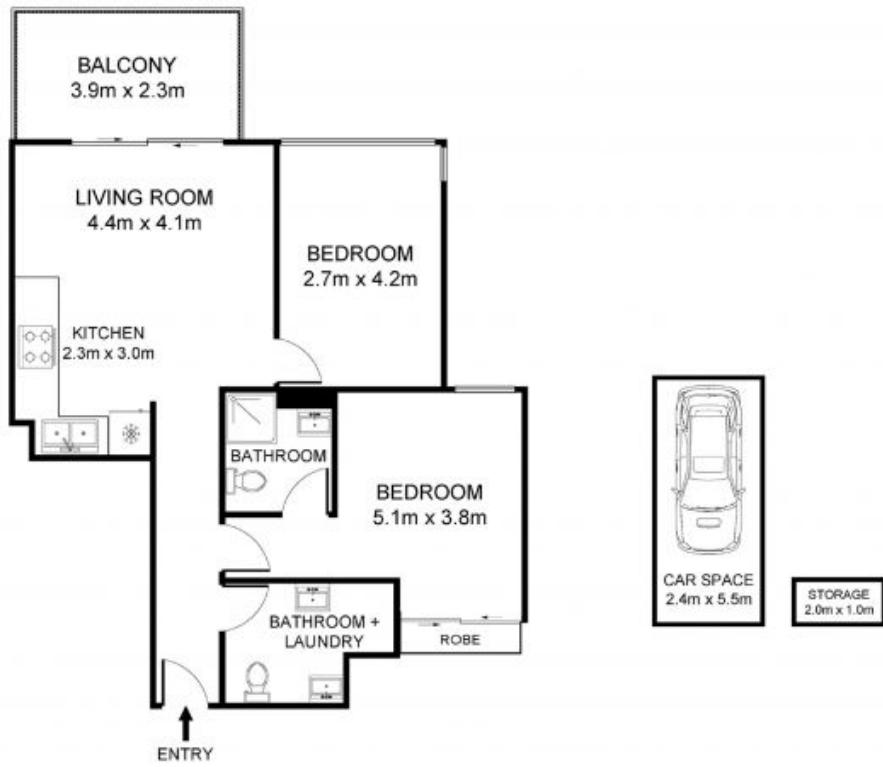
A contemporary haven with instant lifestyle appeal, this stylish two-bedroom apartment boasts sleek light-filled living areas with a seamless open-plan design and a covered alfresco setting for year-round entertaining. Wrapped around manicured communal gardens in a prestigious east-side address, the complex enjoys an enviable walk-rail location, moments to Regimental Park and shops.

Price: \$790,000



**Bobby Shi**

0404 823 911



305c/3 Lorne Ave, Killara



DISCLAIMER: 3D Property View accepts no liability for the accuracy of details contained within our floor plans. All plans are drawn and also checked to the best of our ability, however information contained in our floor plans such as area calculations are approximate, and have not been surveyed or drawn to scale. Our floor plans are for representational purposes only and should be used as such. Do not attempt to refer to our floor plans for structural or detailed information.