



165 Murray Farm Road Beecroft, NSW

4 1 2

Quiet north facing home zoned for Carlingford High on 898sqm

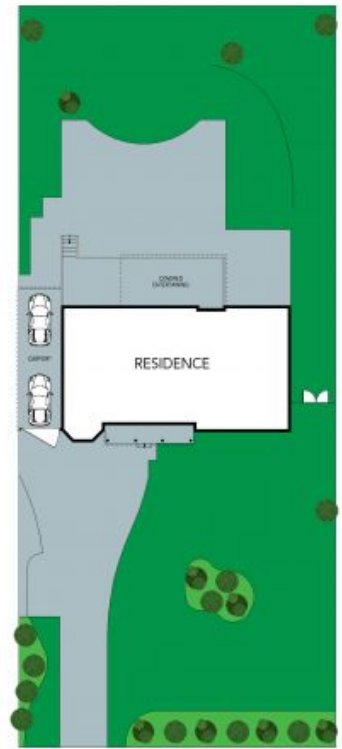
Blissfully immersed in a peaceful tree-lined stretch and distanced behind leafy frontage, this classic single level dwelling is a timeless haven for the family. Tastefully revamped for contemporary functionality, it offers remarkable possibilities to further capitalise on its serene 898sqm parcel with a prime northerly aspect, and buses and excellent schools all within a walk.

Price: Contact Agent
Council Rates: \$491.00 p/q
Water Rates: \$146.00 p/q



Kevin Dearlove

0403 338 302



SITE PLAN

The floor plan is not to scale; measurements are indicative and in metres. Exterior elements are not in position. Plans should not be relied on. Interested parties should make and rely on their own enquiries.

165 Murray Farm Road, Beecroft

