



41 Belford Avenue Bateau Bay, NSW

4 

2 

1 

PERFECT FAMILY HOME!!

Nestled in the sought after suburb of Bateau Bay is this extremely spacious two storey family home situated in a private elevated position. From the moment you enter, you will notice the generous proportions of the property, with multiple living areas and private outdoor entertaining area.

This home has space for the whole family with four bedrooms, two bathrooms and an outside alfresco entertainment area which will appeal to the whole family. Set on a 582sqm (approx.) block the backyard has plenty of space for the kids to play or to add that extra storage (STCA). This property is a family entertainer delight and you won't want to miss out. Give us a call today.

Price: \$850,000



Abdullah Choudhari

0401 977 187

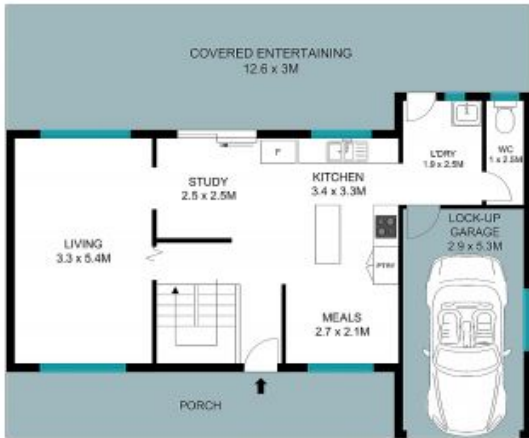


Marc Correia

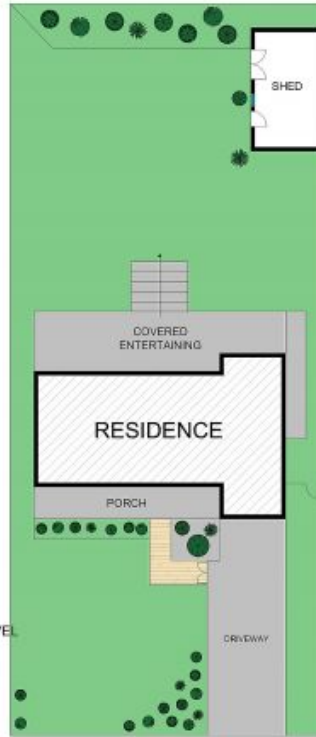
0412 460 372



LEVEL ONE



GROUND LEVEL



SITE PLAN



The site plan and floor plan are not to scale; measurements are indicative in meters. Gardens and trees are placed for illustration purposes. Plans should not be relied on. Interested parties should make and rely on their own inquiries. All other information provided has been collected from reliable sources but cannot be guaranteed for accuracy.

41 Belford Avenue, Bateau Bay

