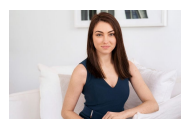


1.309/18 Hannah Street Beecroft, NSW 1 1 1

Luxury unit with unique floor-plan

Showcasing all the essentials of the ultimate apartment lifestyle, this brand-new designer residence is set within the 'Beecroft Place' development. It combines light filled interiors, luxury finishes and an easycare layout to deliver an excellent low-maintenance home.

Price: Leased before First Open Home
Bond: \$1,680
Available Date: 17/06/2021



Sarah Hastings

02 8893 2218



The floor plan is not to scale. Measurements are indicative and in metres.



1.309/18 Hannah Street, Beecroft
stonerealestate.com.au

Produced by DIAKRIT



The interior style and design of this floor plan is designed for inspiration purposes to show the living spaces. It is not an exact replica of the furniture and fittings in the home.

1.309/18 Hannah Street, Beecroft
stonerealestate.com.au

Produced by DIAKRIT