



16/5 Westminster Avenue Dee Why, NSW



Executive apartment with panoramic views

Perfectly positioned with an elevated North Easterly corner position in the sought after Westminster security apartment block, sits this this renovated two bedroom apartment. Boasting panoramic views over Dee Why Beach & Long Reef Headland, and a modern contemporary feel throughout, this executive apartment is the ultimate lifestyle escape.

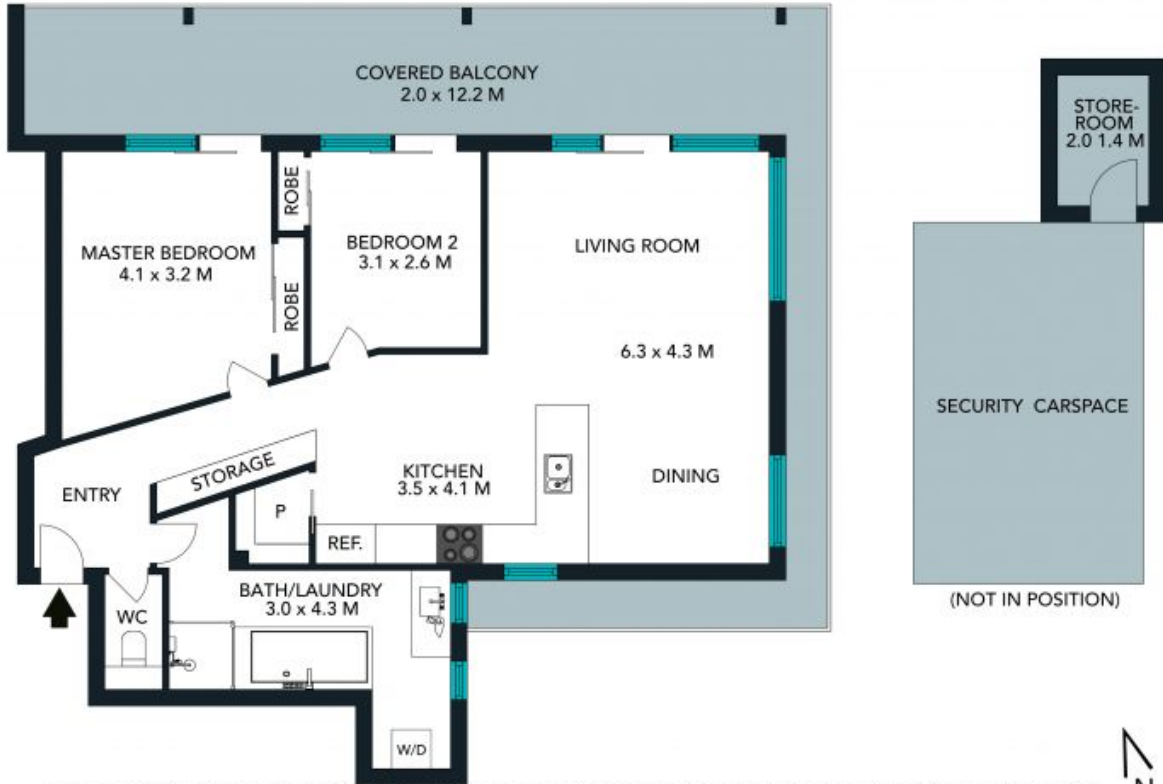
Price: Deposit taken

Available Date: 14/06/2021



Todd Baker

0407 795 090



The floor plan is not to scale, measurements are indicative and in metres. Exterior elements are not to position. Plans should not be relied on. Interested parties should make and rely on their own enquiries. All other information provided has been collected from reliable sources but cannot be guaranteed for accuracy.

16/5 Westminister Avenue, Dee Why





The floor plan is not to scale, measurements are indicative and in metres. All features included in this 3D plan are for inspiration purposes only. This is not an exact replica of the property or the position of exterior elements. Plans should not be relied on. Interested parties should make and rely on their own enquiries.

16/5 Westminster Avenue, Dee Why

