

7/2a Campbell Parade Manly Vale, NSW



North-facing apartment in lifestyle setting

Set within the exclusive 'Augusta' security complex overlooking the golf course and adjacent to Passmore Reserve, this luxury apartment enjoys a sunny northerly-aspect with an uninterrupted leafy outlook. Complete with double garage, lift access to the front door and a central, convenient beaches location, this lifestyle apartment has plenty to offer first home buyers, downsizers, and investors.

Price: \$1,635,000
Council Rates: \$358.00 p/q
Water Rates: \$145.00 p/q
Strata Rates: \$1,158.00 p/q



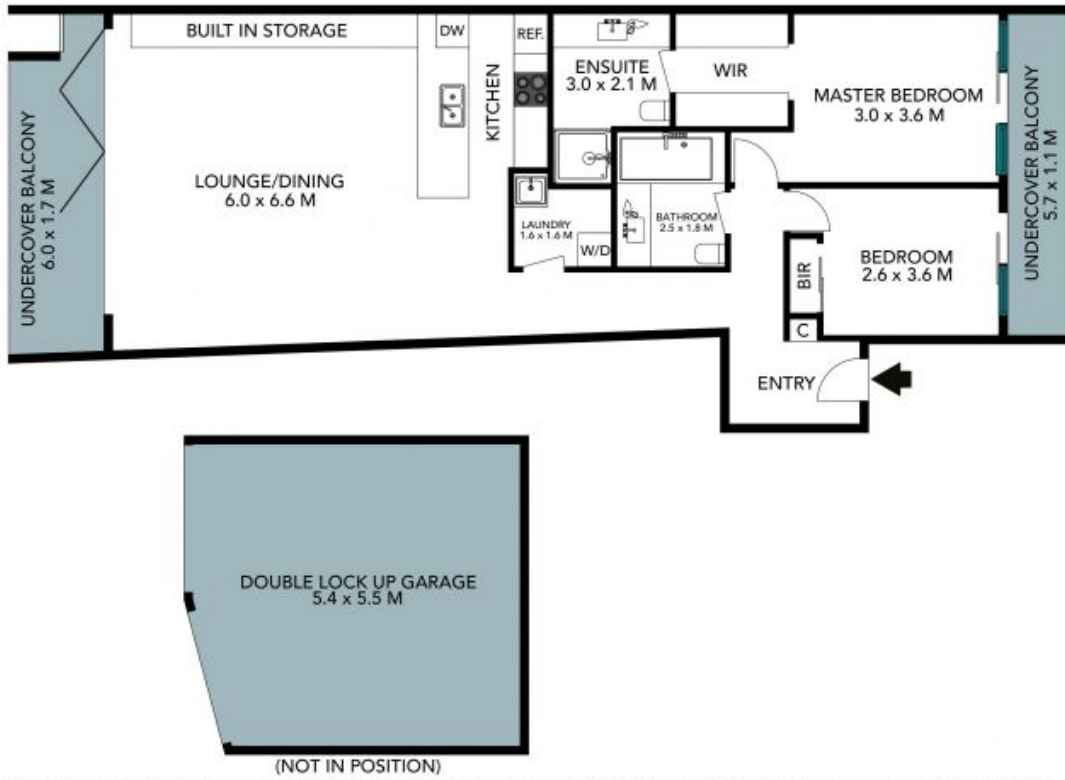
Chris Elliott

0410 416 066



Byron McDonald

0422 142 863



The floor plan is not to scale, measurements are indicative and in metres. Exterior elements are not in position. Plans should not be relied on. Interested parties should make and rely on their own enquiries. All other information provided has been collected from reliable sources but cannot be guaranteed for accuracy.



7/2a Campbell Parade, Manly Vale





The floor plan is not to scale, measurements are indicative and in metres. All features included in this 3D plan are for inspiration purposes only. This is not an exact replica of the property or the position of exterior elements. Plans should not be relied on. Interested parties should make and rely on their own enquiries.

7/2a Campbell Parade, Manly Vale

