

10/261 Condamine Street Manly Vale, NSW

2 2 2

As-new entertainer in a premier lifestyle hotspot

Occupying the prized northeast corner setting on the top floor penthouse of a three year old security building, this sleek and stylish apartment promises a lifestyle of supreme luxury and convenience. Showcasing streamline contemporary design aesthetics, exceptionally bright and spacious interiors and seamless flow to an enormous sunlit entertainer's terrace with expansive district views, it is literally footsteps to cafes, supermarket chains, B-line city buses and minutes to a selection of beaches and Warringah Mall Westfield.

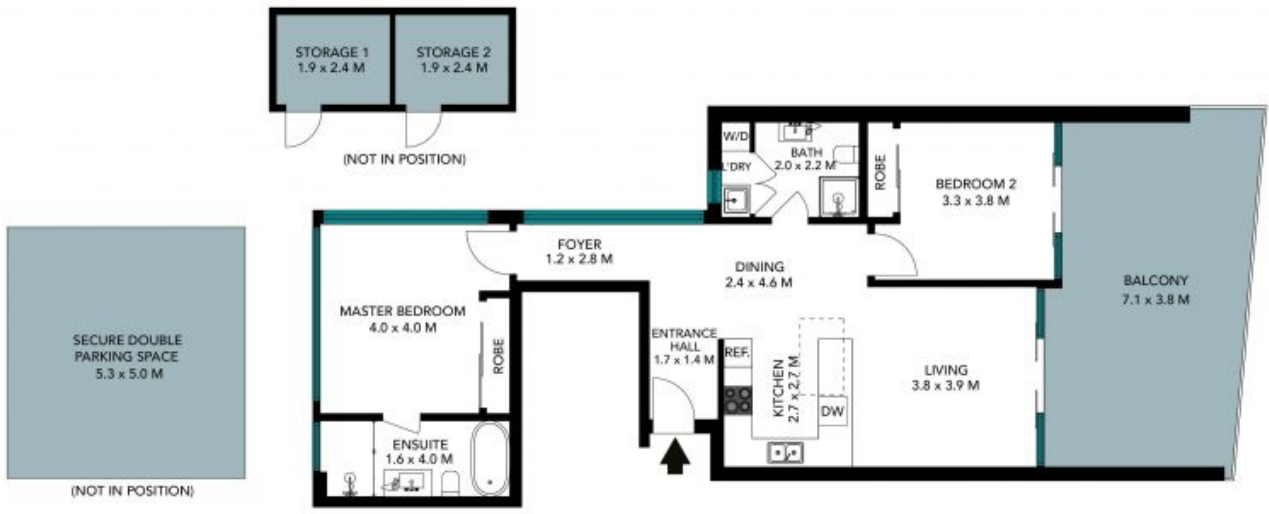
Price: HOLDING FEE TAKEN
Bond: \$3,400
Available Date: 17/07/2021



Abbey Robotham
02 8962 2200



Laurien Bakker
0499 172 013



The floor plan is not to scale, measurements are indicative and in metres. Exterior elements are not in position. Plans should not be relied on. Interested parties should make and rely on their own enquiries. All other information provided has been collected from reliable sources but cannot be guaranteed for accuracy.



10/261 Condamine Street, Manly Vale

