



130-132 Peppertree Drive JIMBOOMBA, QLD

4

2

5

### Fantastic Family Entertainer In A Highly Desirable Location!!

Situated in a highly desirable location this beautifully presented and light filled single level residence offers a country lifestyle without compromise!

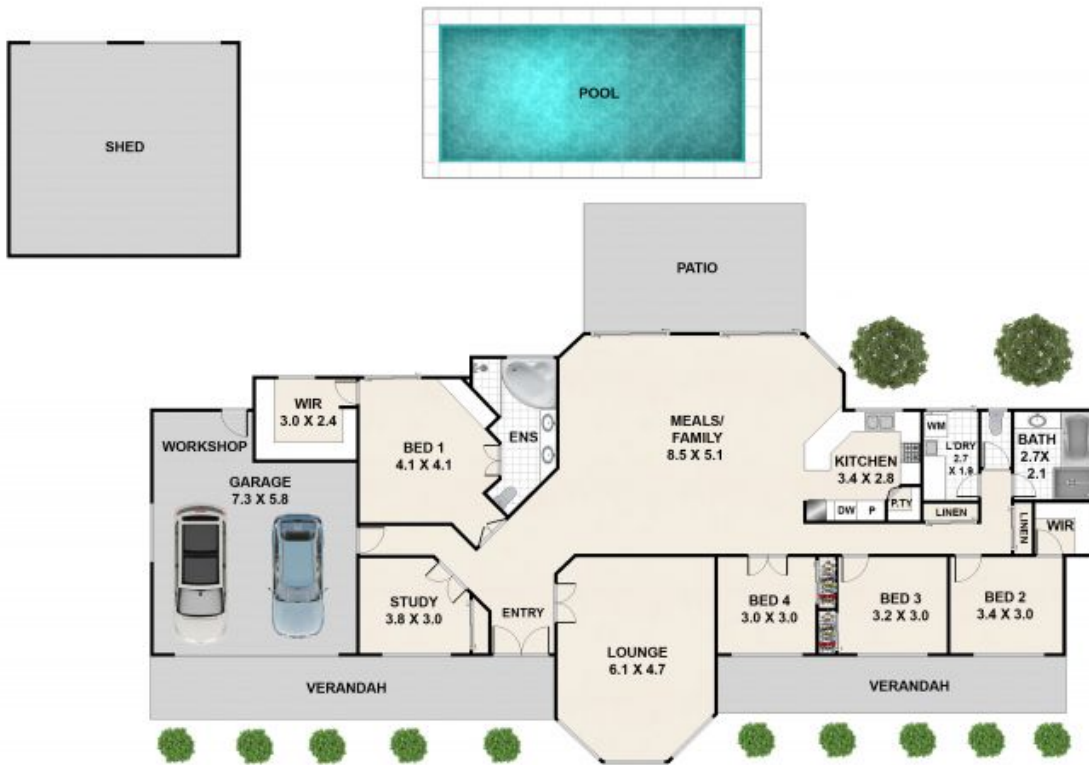
Located on a picturesque 5,090m2 allotment in the exclusive Jimboomba Woods Estate this magnificent property is the perfect family entertainer.

**Price:** \$649,000



**Cameron Rice**

0408 885 251



Approx Sqm  
 Inside Areas - 244.0 Sqm  
 Outside Areas - 41.3Sqm  
 The Total Areas - 285.3 Sqm

130-132 Peppertree Drive, Jimboomba

Whilst every attempt has been made to ensure the accuracy of the floorplan shown, all measurements, positioning, fixtures, fittings and any other data shown are an approximate interpretation for illustrative purposes only and are not to scale. No responsibility is taken for any error, omission, mis-statement or use of data shown.