

12a Gosford Avenue The Entrance, NSW

3 2 2

Low Maintenance Living!

Less than a 1.5km walk from the popular "The Entrance Ocean Baths", The Entrance Beach and local cafes, this Torrens Title duplex is an inspired choice for downsizes or as a holiday getaway with excellent rental potential.

Its single level design showcases immaculate interiors and a fresh, beachside style; spacious and bright, the living and dining zones are anchored by a beautiful open plan kitchen with stone bench tops that doubles as a casual meals bar. Additional highlights include level low maintenance yard, 9ft ceilings, oversized bedrooms and a spacious double car garage.

Get in touch with our sales team today to organise your private viewing!

Price: \$812,000



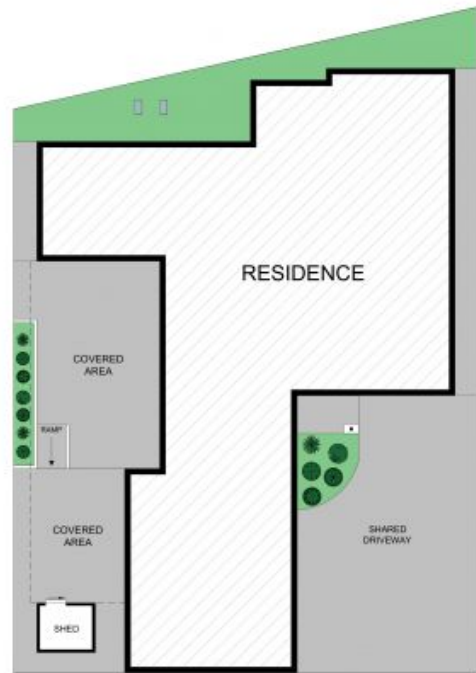
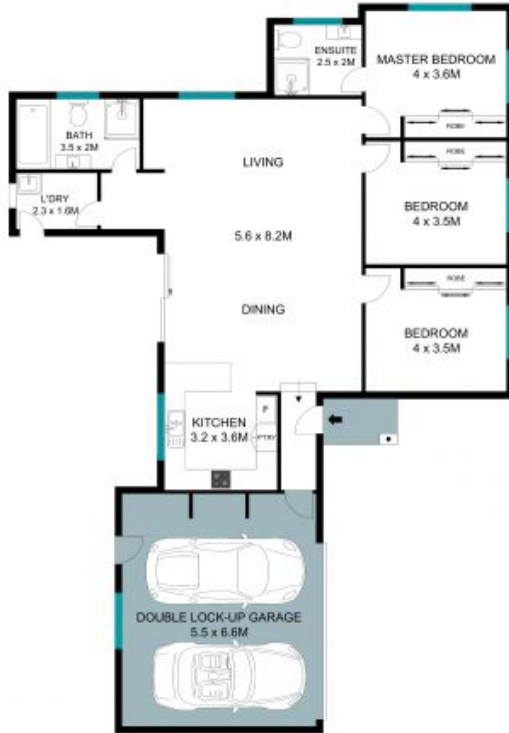
Volkan Akintetik

0499 830 247



Reece Caira

0431 013 342



SITEPLAN



The site and floor plan are not to scale; measurements are indicative in meters. Paths and trees are placed for illustrative purposes. Plans should not be relied on. Interested parties should make and rely on their own inquiries. All other information provided has been collected from reliable sources but cannot be guaranteed for accuracy.

12A Gosford Avenue, The Entrance

