



212 Wollongong Road Arncliffe, NSW



Stunning character home in popular Arncliffe pocket

A home of exquisite early century character, this freestanding full brick residence complements timeless class with clever enhancements for modern living. Beyond the beautiful facade, interiors welcome with a great sense of light and space, before spilling out to a private level yard. Placed within a stroll of Arncliffe and Gardiner parks, it's also close to local shops plus train and bus services.

Price: Contact agent

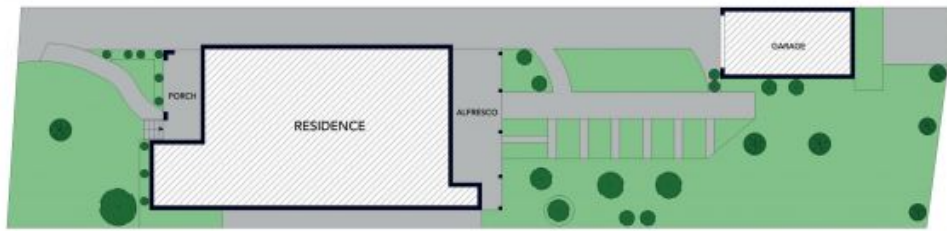
Council Rates: \$545.00 p/q

Water Rates: \$145.71 p/q

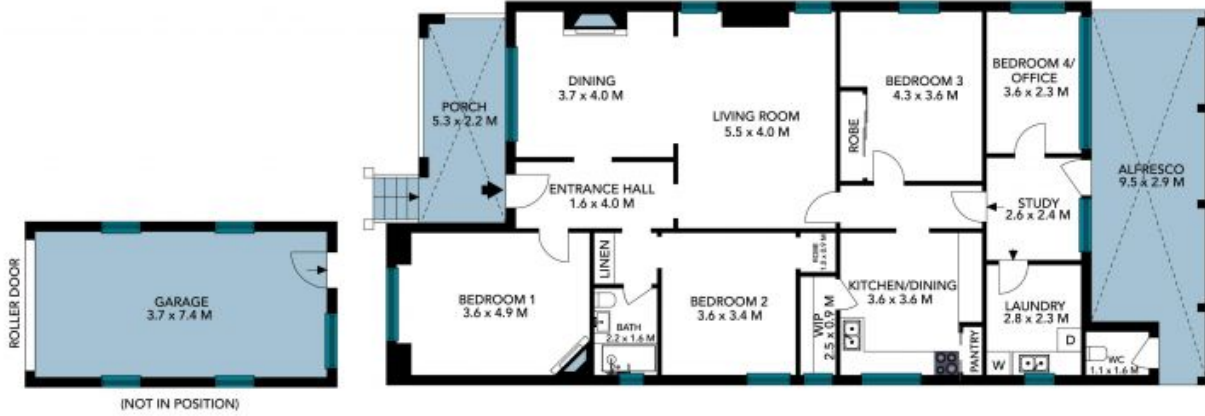


Will Soulos

0403 065 608



SITE PLAN



The site plan and floor plan are not to scale, measurements are indicative and in metres. Shades and lines are placed for illustrative purposes. Plans should not be relied on. Interested parties should make and rely on their own enquiries. All other information provided has been collected from reliable sources but cannot be guaranteed for accuracy.

212 Wollongong Road, Arncliffe





The floor plan is not to scale, measurements are indicative and in metres. All features included in this 3D plan are for inspiration purposes only. This is not an exact replica of the property or the position of exterior elements. Plans should not be relied on. Interested parties should make and rely on their own enquiries.

212 Wollongong Road, Arncliffe

