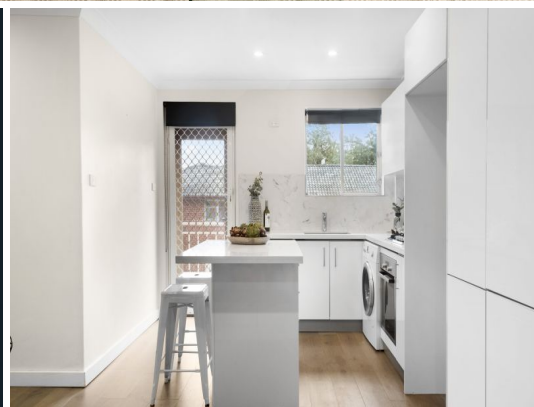




**PRIVATE
INSPECTIONS**

stonerealestate.com.au



11/6 Fairway Close Manly Vale, NSW

2 1 1

Treetop tranquillity and vibrant beachside living - Contact agent for a private appointment

Sunshine and gentle cross breezes flow through this apartment that capitalises on its unique parkland setting and maximises every aspect of its outdoor and indoor living spaces. Comprehensively refurbished and set on the top floor of a boutique complex, this residence enjoys treetop views with the very best of beachside living and urban centrlicity. Perfect for first home buyers and investors alike.

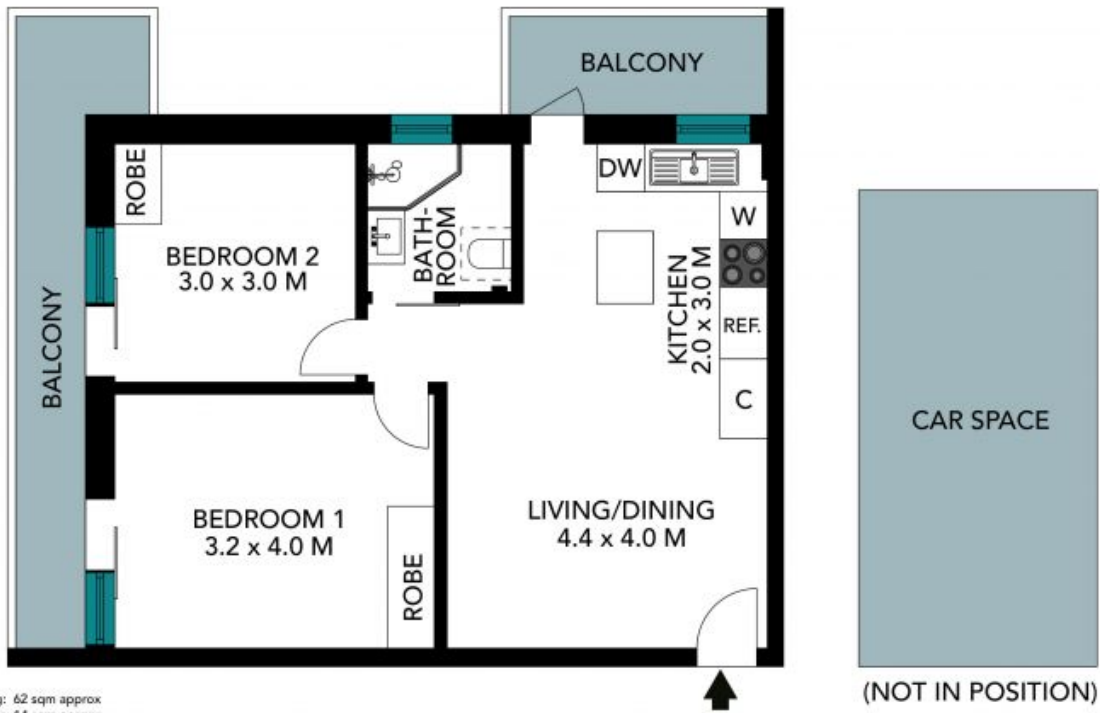
Price: Contact Agent
Council Rates: \$358.00 p/q
Water Rates: \$140.00 p/q
Strata Rates: \$837.00 p/q



Chris Elliott
0410 416 066



Chris Elliott
0410 416 066



Internal Living: 62 sqm approx
 External Living: 14 sqm approx
 Total Living Area: 76 sqm approx

The floor plan is not to scale; measurements are indicative and in metres. Exterior elements are not in position. Plans should not be relied on. Interested parties should make and rely on their own enquiries. All other information provided has been collected from reliable sources but cannot be guaranteed for accuracy.



11/6 Fairway Close, Manly Vale





Internal Living: 62 sqm approx
External Living: 14 sqm approx
Total Living Area: 76 sqm approx

The floor plan is not to scale, measurements are indicative and in metres. All features included in this 3D plan are for inspiration purposes only. This is not an exact replica of the property or the position of exterior elements. Plans should not be relied on. Interested parties should make and rely on their own enquiries.



11/6 Fairway Close, Manly Vale

