



Mosman, NSW

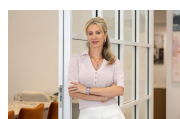


Stunning water views, Balmoral luxury residence

Boasting generous proportions and a sunny north east aspect, this executive residence showcases glorious water views across Balmoral, Middle Harbour and beyond. Extremely well constructed, this home seamlessly merges indoor and outdoor living across three spacious levels. With a focus on entertaining, there is a wonderful roof top terrace with built in BBQ facilities which takes in the panoramic views. Set behind a security entrance with established and private gardens on title, with direct pedestrian access onto Redan Street, you are just a short stroll to Balmoral Beach, restaurants, cafes and parks.

Price:

Contact Marize Bellomo



Marize Bellomo

0414 972 203



Bruce N. Huang

0468 694 060

à,fé²•æ-é»,,



BASEMENT FLOOR PLAN



GROUND FLOOR PLAN



FIRST FLOOR PLAN

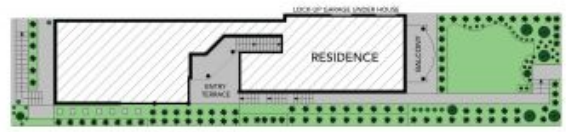
Level Size: 263.3 sqm approx.

The floor plan is not to scale; measurements are indicative and in metres. All features included in this 3D plan are for inspiration purposes only. This is not an exact replica of the property or the position of exterior elements. Plans should not be relied on. Interested parties should make and rely on their own enquiries.

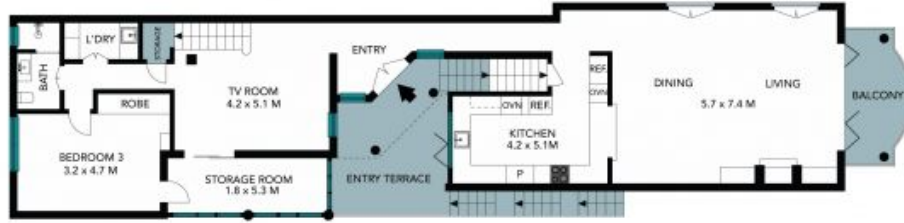




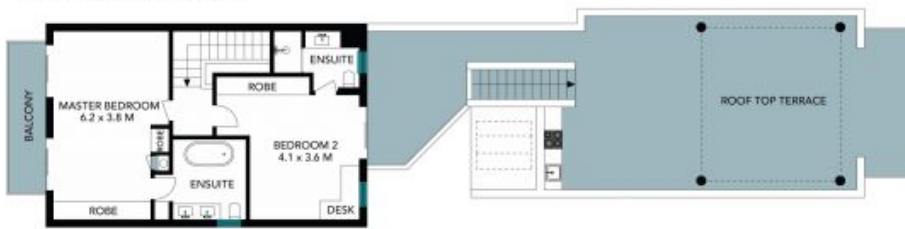
BASEMENT FLOOR PLAN



SITE PLAN



GROUND FLOOR PLAN



FIRST FLOOR PLAN

Level Size: 363.3 sqm approx

The site plan and floor plan are not to scale; measurements are indicative and in metres. Balbes and trees are placed for illustration purposes. Plans should not be relied on. Interested parties should make and rely on their own enquiries. All other information provided has been collected from reliable sources but cannot be guaranteed for accuracy.



STONE