



20/57-75 Buckland Street Chippendale, NSW

3

1

1

A showcase of light, space & warehouse cool

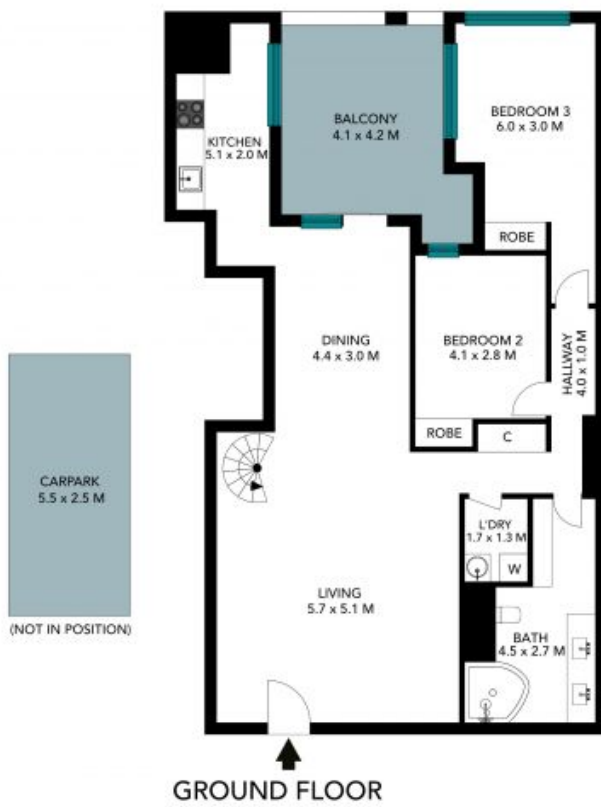
Come and live an uber cool inner-urban lifestyle in this exceptional warehouse apartment that makes an instant impact with its generous dual-level layout, fresh bright interiors and great lifestyle location. This is an ideal choice for buyers seeking a unique and spacious property, one of the largest in the building with approx. 147 sqm of living spaces that is private, secure and positioned within the quality City Mews development. This artistic home comes complete with a central walk-to-everywhere address that has Central Park, Broadway shopping, universities and the CBD all just moments from the door.

Price: Contact Agent
Council Rates: \$296.00 p/q
Water Rates: \$178.00 p/q
Strata Rates: \$1,880.00 p/q



Adrian Vassallo

0406 484 994



The floor plan is not to scale, measurements are indicative and in metres. Solarior elements are not in position. Plans should not be relied on. Interested parties should make and rely on their own enquiries. All other information provided has been collected from reliable sources but cannot be guaranteed for accuracy.

20/57-75 Buckland Street, Chippendale

