

189a Chuter Avenue Sans Souci, NSW

3

2

2

### A stunning offering of quality and convenience

Flowing over one easily accessible level and cleverly crafted with a floorplan that encourages effortless entertaining, this welcoming Torrens titled double brick residence offers low maintenance contemporary living throughout. Ideally positioned with absolutely nothing to add, it is just under a ten-minute level walk to the water's edge and an array of village conveniences.

**Price:** SOLD \$1,730,000 | Ray Fadel

**Council Rates:** \$467.00 p/q

**Water Rates:** \$172.00 p/q



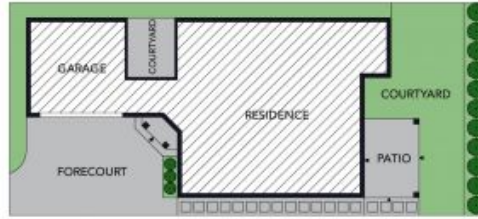
**Ray Fadel**

0413 177 739

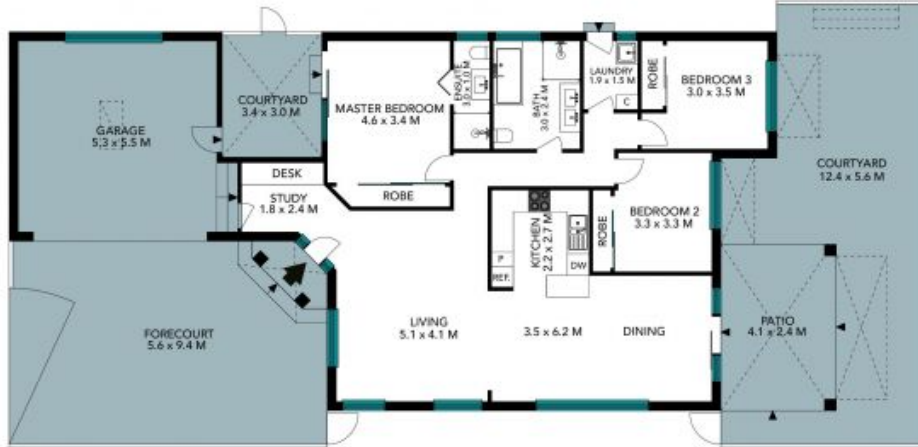


**Heidi Baines**

0447 487 334



SITE PLAN



The site plan and floor plan are not to scale, measurements are indicative and in metres. Bushes and trees are placed for illustration purposes. Plans should not be relied on, interested parties should make and rely on their own enquiries. All other information provided has been collected from reliable sources but cannot be guaranteed for accuracy.



189a Chuter Avenue, Sans Souci





The floor plan is not to scale, measurements are indicative and in metres. All features included in this 3D plan are for inspiration purposes only. This is not an exact replica of the property or the position of exterior elements. Plans should not be relied on. Interested parties should make and rely on their own enquiries.



189a Chuter Avenue, Sans Souci

