



20 Booth Street Arncliffe, NSW

6 3 1

Sold | Sam Abbas

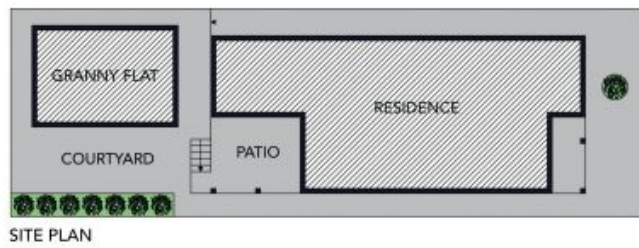
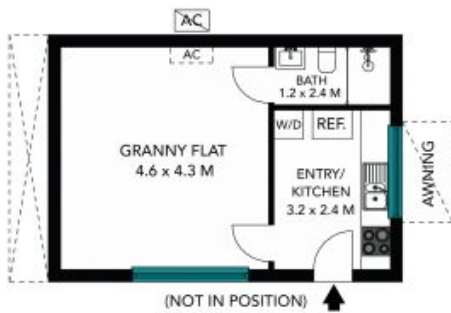
Accommodating a large extended family, or providing a solid rental return, this five-bedroom brick home - plus granny flat - is rich in opportunity. A 10-minute walk from express trains at Wollri Creek, the property is in a booming neighbourhood just 10km from the CBD. Its quiet position is also close to beaches, and a stroll to restaurants, riverside parklands and shops.

Price: \$1,780,000



Sam Abbas

0406 750 075



The site plan and floor plan are not to scale, measurements are indicative and in metres. Shades and lines are placed for illustration purposes. Plans should not be relied on. Interested parties should advise and rely on their own enquiries. All other information provided has been collected from reliable sources but cannot be guaranteed for accuracy.

20 Booth Street, Arncliffe

STONE



The floor plan is not to scale, measurements are indicative and in metres. All features included in this 3D plan are for inspiration purposes only. This is not an exact replica of the property or the position of exterior elements. Plans should not be relied on. Interested parties should make and rely on their own enquiries.

20 Booth Street, Arcliffe



STONE