



5/14 Leichhardt Street Glebe, NSW



Breathtaking panoramas

This elegantly re-imagined, top floor apartment radiates an impressive synergy between spectacular views and ingeniously revamped interiors and boasts a dress circle seat to one of the best backdrops in town.

The apartment features a private sunny north east aspect beside a leafy harbour foreshore reserve. Inside, there is a dazzling interplay of light & space but still plenty of remaining opportunity for you to flaunt your own creative flair. This ideal lifestyle location is hidden in a whisper quiet street with direct access to the Blackwattle Bay Foreshore walks and just footsteps to Glebe Point Road eateries, cafes and transport including the light rail. Rare opportunity to acquire an affordable harbour-side apartment in an enviable location.

Price: \$1,510,000



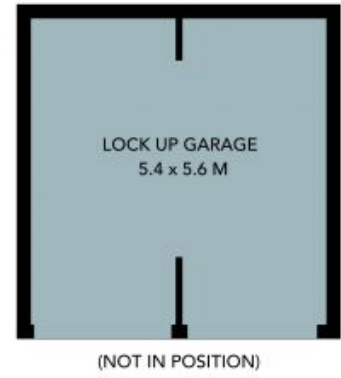
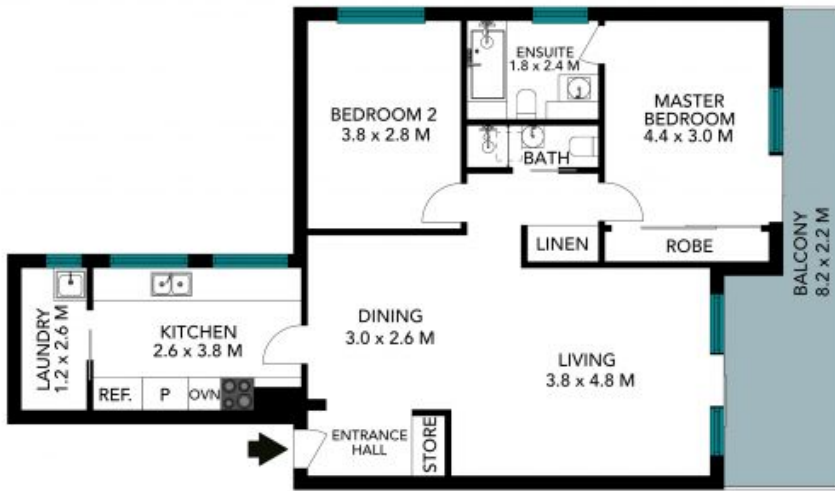
Phillip Massa

0411 173 929



Gabrielle Vicari

0406 877 720



The floor plan is not to scale, measurements are indicative and in metres. Colour statements are not to position. Plans should not be relied on, interested parties should make and rely on their own enquiries. All other information provided has been collected from reliable sources but cannot be guaranteed for accuracy.



5/14 Leichhardt St, Glebe





The floor plan is not to scale, measurements are indicative and in metres. All features included in this 3D plan are for inspiration purposes only. This is not an exact replica of the property or the position of exterior elements. Plans should not be relied on. Interested parties should make and rely on their own enquiries.



5/14 Leichhardt St, Glebe

