



3/684B Pacific Highway Killara, NSW

2 1 2

### Quiet and spacious walk to rail townhouse

Quietly positioned and basking in north sunshine, this elegant full brick townhouse enjoys spacious indoor/outdoor living with a large sun-kissed entertaining terrace, modern kitchen and bathroom and a versatile layout with space to work from home. The walk to rail location provides a quick commute to the City and is close to Gordon and Lindfield shopping, and Chatswood.

**Council Rates:** \$356.00 p/q

**Water Rates:** \$144.11 p/q

**Strata Rates:** \$727.00 p/q



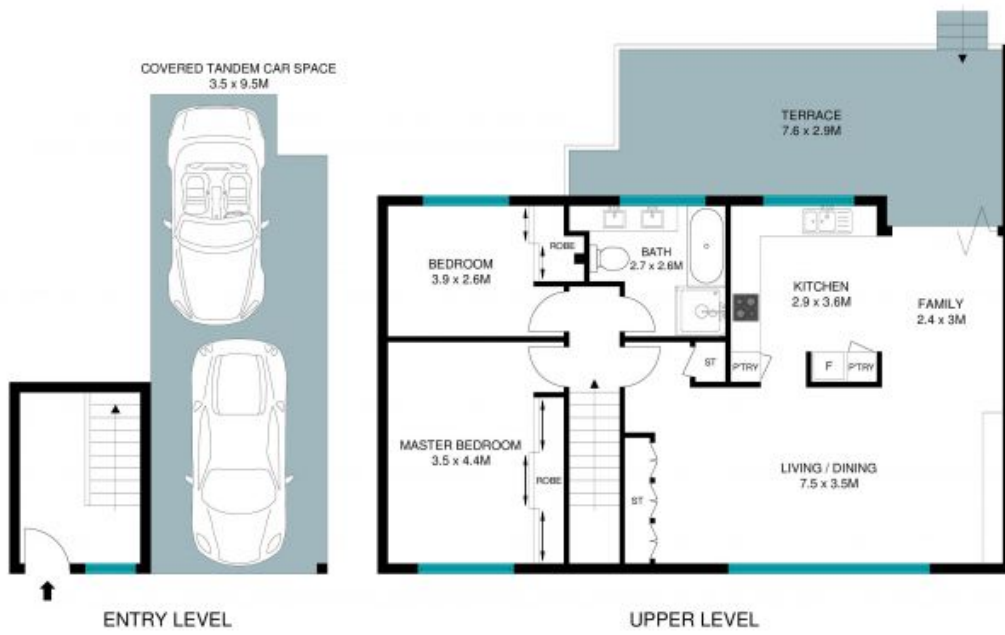
**Steven Kourdis**

0402 555 675



**Ryan Woo**

0410 884 680



The site plan and floor plan are not to scale; measurements are indicative in meters. Bathrooms and trees are placed for illustrative purposes. Plans should not be relied on. Interested parties should make and rely on their own inquiries. All other information provided has been collected from reliable sources but cannot be guaranteed for accuracy.

3/684b Pacific Highway, Killara





ENTRY LEVEL

UPPER LEVEL



The site plan and floor plan are not to scale. Measurements are indicative in meters. Bathrooms and trees are placed for illustration purposes. Plans should not be relied on. Interested parties should make and rely on their own inquiries. All other information provided has been collected from reliable sources but cannot be guaranteed for accuracy.

3/684b Pacific Highway, Killara

