

207/2 West Promenade Manly, NSW



### North facing ultra-chic executive retreat in the heart of Manly

Defined by its flawless contemporary design, state-of-the-art appointments and sun drenched north facing terrace, this near-new security apartment delivers the ultimate in luxury and lifestyle for the consummate entertainer or discerning downsizer. Peacefully placed towards the rear of the exclusive 'Wharfside' apartments with lift access, it is footsteps from Manly Wharf and cosmopolitan eateries and a short breezy stroll down The Corso to iconic Manly Beach.

**Price:** \$2,760,000



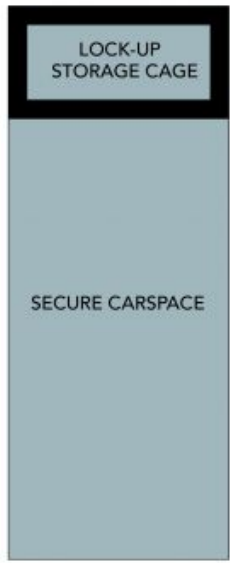
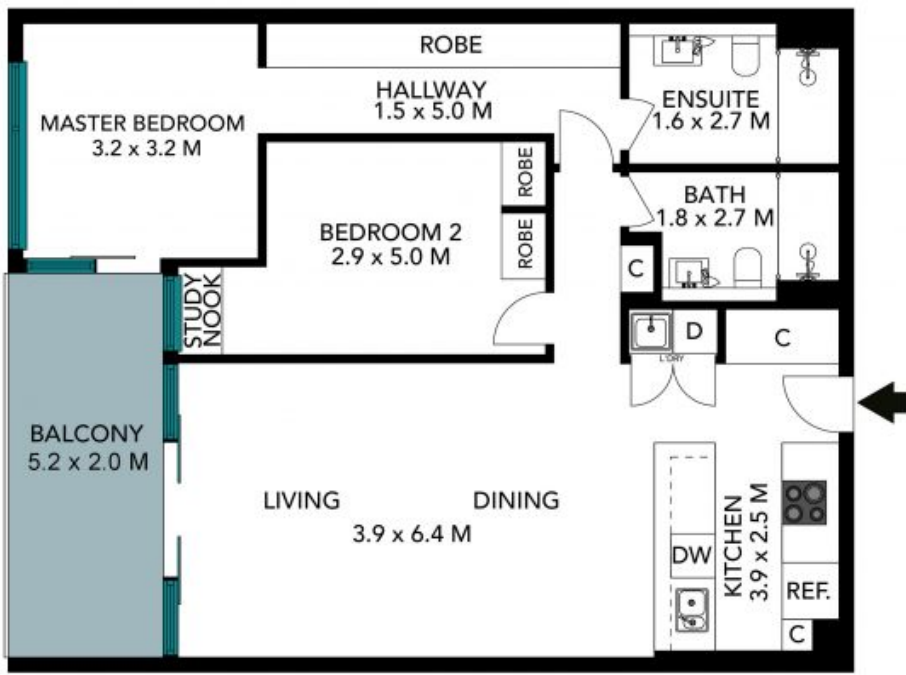
**Candice Cattell**

0417 311 777



**Laura Stenta**

0404 307 166



(NOT IN POSITION)



The floor plan is not to scale, measurements are indicative and in metres. Exterior elements are not in position. Plans should not be relied on. Interested parties should make and rely on their own enquiries. All other information provided has been collected from reliable sources but cannot be guaranteed for accuracy.

207/2 West Promenade, Manly





The floor plan is not to scale, measurements are indicative and in metres. All features included in this 3D plan are for inspiration purposes only. This is not an exact replica of the property or the position of exterior elements. Plans should not be relied on. Interested parties should make and rely on their own enquiries.

207/2 West Promenade, Manly

