



9 Bromborough Road Roseville, NSW



### Amazing opportunity

We have just sold this property off-market to a buyer from our database. If you would like any further information, please don't hesitate to get in contact.

Price:

Contact Agent



**Jill Henry**

0416 493 555



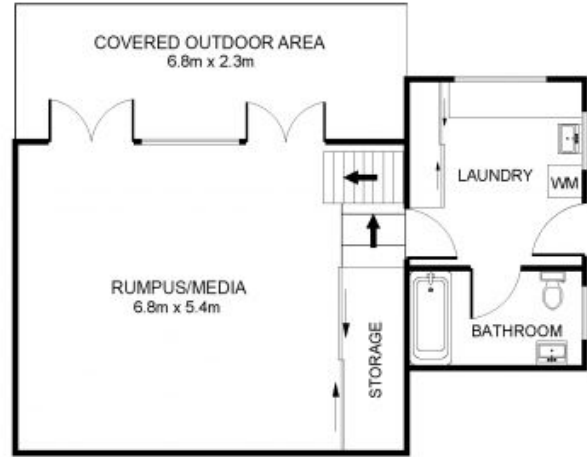
**Sahil Kotian**

0434 172 588

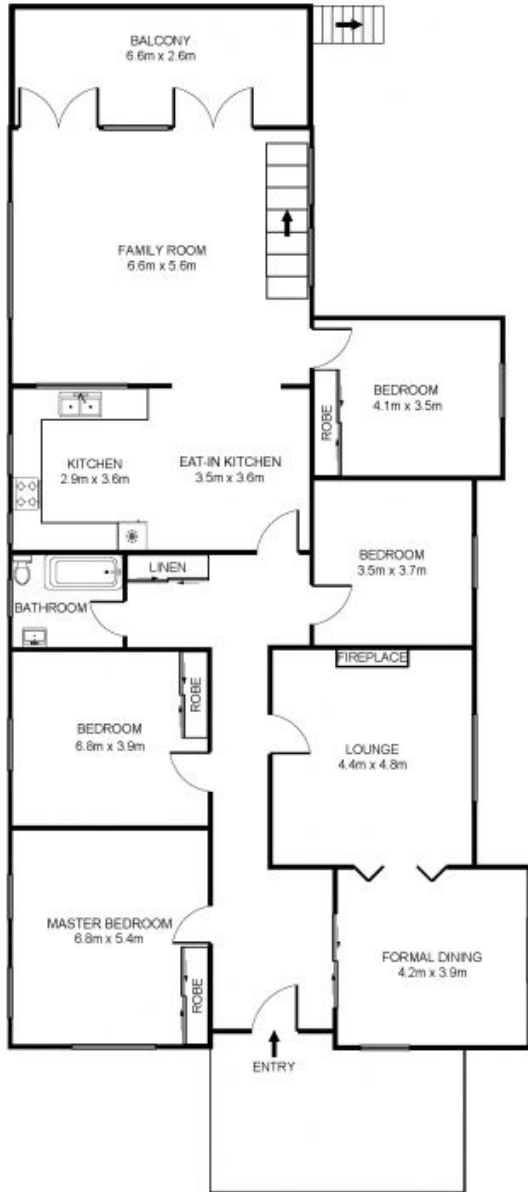


UNDERCOVER  
CARPORT  
3.3m x 5.5m

**NOT IN POSITION**



**LOWER GROUND FLOOR**



**GROUND FLOOR**



**SITE PLAN**  
(NOT TO SCALE)

**9 Bromborough Road, Roseville**

**INTERNAL AREA : 256.0 SQM APPROX.**

DISCLAIMER: 3D Property View accepts no liability for the accuracy of details contained within our floor plans. All plans are drawn and also checked to the best of our ability, however information contained in our floor plans such as area calculations are approximate, and have not been surveyed or drawn to scale. Our floor plans are for representational purposes only and should be used as such. Do not attempt to refer to our floor plans for structural or detailed information.