

546 - 548 Parramatta Road Petersham, NSW

EXCEPTIONAL LEASING OPPORTUNITY WITH UNPARALLELED EXPOSURE

Stone Commercial are proud to Exclusively present 546- 548 Parramatta Road, Petersham. The property is positioned on the high point of Taverners Hill and offers a wide glass frontage with endless exposure.

Council Rates: \$0.00 p/q
Water Rates: \$0.00 p/q
Strata Rates: \$0.00 p/q



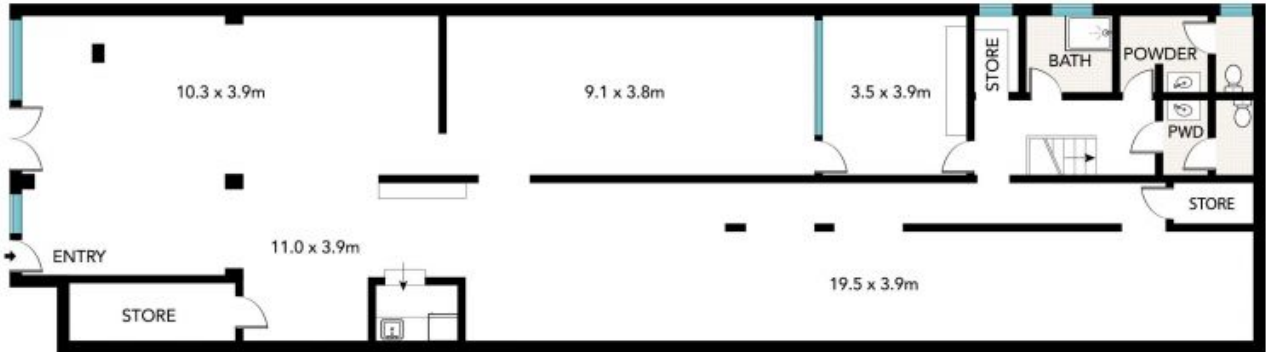
Paul Di Mauro

0431 099 976

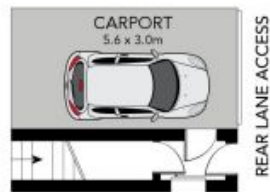


Ariel Balkin

0429 496 740



CEILING HEIGHT: 2.5m - 3.5m



546/548 Parramatta Road, Petersham

INT: 250 m²
 PARKING: 17 m²



All information in this document has been gathered from various third party sources we believe to be reliable; however, we cannot guarantee its accuracy, and we accept no responsibility and disclaim all liability in respect to any errors, omissions, inaccuracies or misstatements in this document. Prospective purchasers are advised to carry out their own investigations and rely on their own enquiries.