



19 Hannah Street Beecroft, NSW



### Superb family space in the heart of Beecroft

A sanctuary of grand proportions, this remarkable dwelling offers an enticing package of space and peaceful convenience. Versatility is key with its sprawling layout, flexible guest retreat and private setting on a lush 724sqm parcel, for a home timeless at heart while attuned to today's comforts with transport, shops and schools right under its nose.

**Price:** \$2,361,000  
**Council Rates:** \$538.00 p/q  
**Water Rates:** \$151.00 p/q



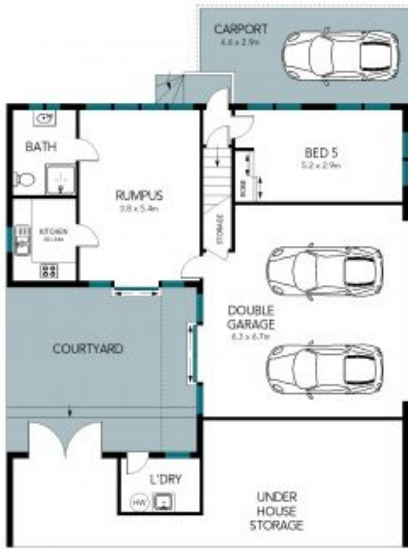
**Kevin Dearlove**

0403 338 302



**Chloe Mawass**

0431 983 240



The floor plan is not to scale; measurements are indicative and in metres. Exterior elements are not in position. Plans should not be relied on. Interested parties should make and rely on their own enquiries.

19 Hannah Street, Beecroft

