



4 Chuter Street McMahons Point, NSW

3 

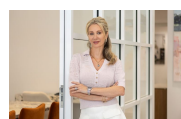
2 

OWN A PIECE OF HISTORIC SYDNEY SET IN MODERN COMFORT AND STYLE

The original facade of this rare 1880's Whaler's Cottage has been lovingly preserved, extending into the feature walls of a multi-level, rear addition with all the gloss and comfort required of a modern lifestyle. Perfectly positioned in one of Sydney's most desirable suburbs, experience the best of both privacy and convenience of location.

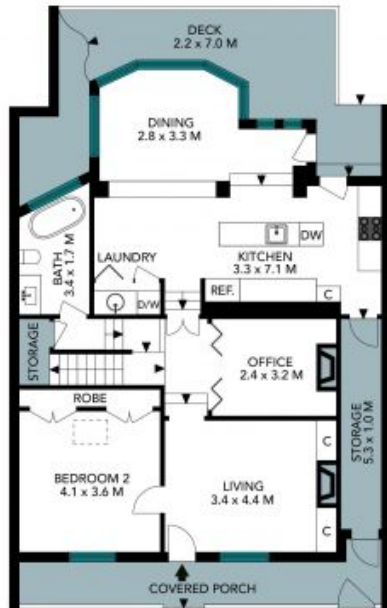
Price:

Contact Dolan Reskov



Marize Bellomo

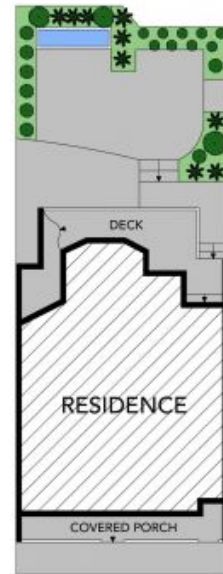
0414 972 203



ENTRY LEVEL



UPPER LEVEL



SITE PLAN

Internal Living: 197 sqm approx
 External Living: 43 sqm approx
 Total Living Area: 240 sqm approx

The site plan and floor plan are not to scale, measurements are indicative and in metres. Bushes and trees are placed for illustration purposes. Plans should not be relied on. Interested parties should make and rely on their own enquiries. All other information provided has been collected from reliable sources but cannot be guaranteed for accuracy.



4 Chuter Street, McMahons Point





ENTRY LEVEL



UPPER LEVEL

Internal Living: 197 sqm approx
 External Living: 43 sqm approx
 Total Living Area: 240 sqm approx

The floor plan is not to scale, measurements are indicative and in metres. All features included in this 3D plan are for inspiration purposes only. This is not an exact replica of the property or the position of exterior elements. Plans should not be relied on. Interested parties should make and rely on their own enquiries.



4 Chuter Street, McMahons Point

