



883B Princes Highway Engadine, NSW

4 2 2

### Modern masterpiece

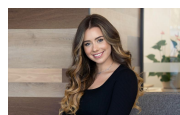
This single-level, contemporary family home captures natural light from every aspect. Featuring a fabulous alfresco entertaining deck with a tranquil vista, this home is perfect for the modern entertainer. Conveniently located close to schools, shops, and transport.

**Price:** \$1,350,000 - \$1,485,000



**Gerard Foote**

0433 421 333



**Mary Orfanos**

0422 889 000



The floor plan is not to scale, measurements are indicative and in metres. Exterior elements are not in position. Plans should not be relied on, interested parties should make and rely on their own enquiries. All other information provided has been collected from reliable sources but cannot be guaranteed for accuracy.

883B Princes Highway  
Engadine



The floor plan is not to scale, measurements are indicative and in metres. All features included in this 3D plan are for inspiration purposes only. This is not an exact replica of the property or the position of exterior elements. Plans should not be relied on. Interested parties should make and rely on their own enquiries.