



The Esplanade Ettalong Beach, NSW

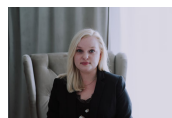
2 1 1

### Location Location Location!

You can't get much better than this! Directly opposite the beautiful Ettalong Beach with 180 degree water views is this bright and airy 2 bedroom apartment only a few minutes walk to the Ferry!

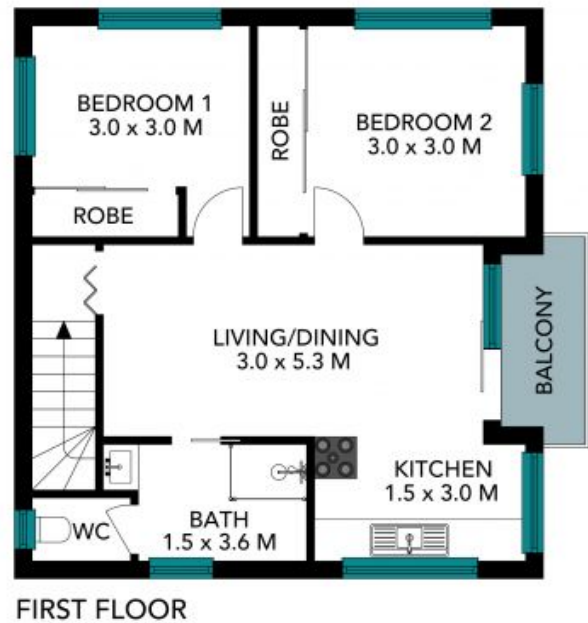
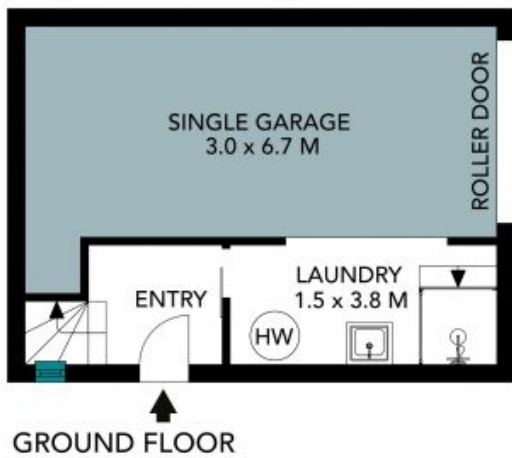
**Price:** \$520 p/week

**Available Date:** 21/09/2021



**Magdalena Kowalska**

0499 229 748



The floor plan is not to scale, measurements are indicative and in metres. Colour elements are not to position. Plans should not be relied on, interested parties should make and rely on their own enquiries. All other information provided has been collected from reliable sources but cannot be guaranteed for accuracy.



1/78 The Esplanade, Ettalong Beach





GROUND FLOOR



FIRST FLOOR

The floor plan is not to scale, measurements are indicative and in metres. All features included in this 3D plan are for inspiration purposes only. This is not an exact replica of the property or the position of exterior elements. Plans should not be relied on. Interested parties should make and rely on their own enquiries.

1/78 The Esplanade, Ettalong Beach

