



11 Helicia Avenue Figtree, NSW

4

2

1

Family retreat enjoying escarpment outlook

Capturing northerly views towards Mount Keira, this stylishly updated residence provides a wonderful living environment for young families seeking space to grow. You'll instantly feel at home with the welcoming sun washed living areas and lovely garden settings. Tucked away in a peaceful pocket amid beautiful greenery, it offers a great sense of privacy while still close to shops and schools.

Price:

Auction



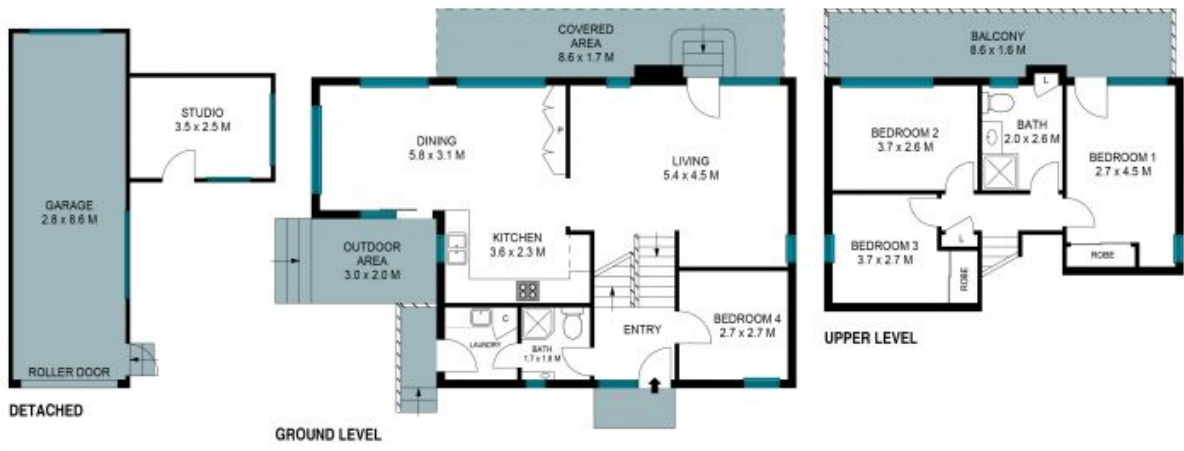
Sarah Ward

0400 439 602



Benjamin Sayers

02 4228 1622



The site plan and floor plan are not to scale, measurements are indicative and in metres. Bushes and trees are placed for illustrative purposes. Plans should not be relied on. Interested parties should make and rely on their own enquiries. All other information provided has been collected from reliable sources but cannot be guaranteed for accuracy.



11 Helicia Avenue, Figtree

INT : 112m²
 EXT : 38m²
 GARAGE / STUDIO : 33m²

