



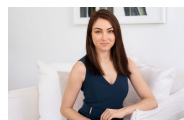
35/25-27 Wongala Crescent Beecroft, NSW

2 2 2

### Stunning Two Bedroom Penthouse

Situated in 'The Grove', is this lovely penthouse apartment. Featuring a north facing aspect, the apartment provides city and valley views plus an abundance of natural light throughout the day. You will enjoy the location with local shops, cafes and restaurants, sought after schooling and public transport at your doorstep!

**Price:** Deposit Taken  
**Available Date:** 22/09/2021



**Sarah Hastings**  
02 8893 2218