



14/614 Princes Highway Kirrawee, NSW 2  1  1 

**Fantastic opportunity**

Beautifully maintained, private and convenient, this spacious ground floor unit provides a fantastic opportunity for the new owner to capitalise on a residence in one of the Sutherland shire's most popular suburbs. This low maintenance residence offers easy care and spacious living in a secure complex, which is perfect for first home buyers, downsizers and investors.

**Price:** Price on request  
**Council Rates:** \$352.55 p/q  
**Water Rates:** \$150.99 p/q  
**Strata Rates:** \$650.00 p/q



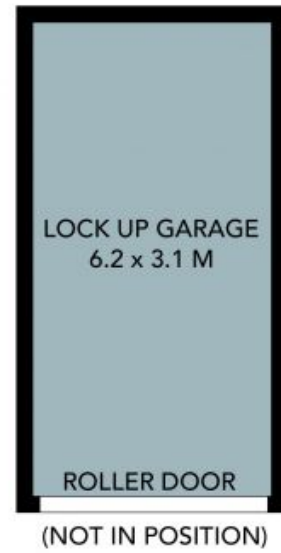
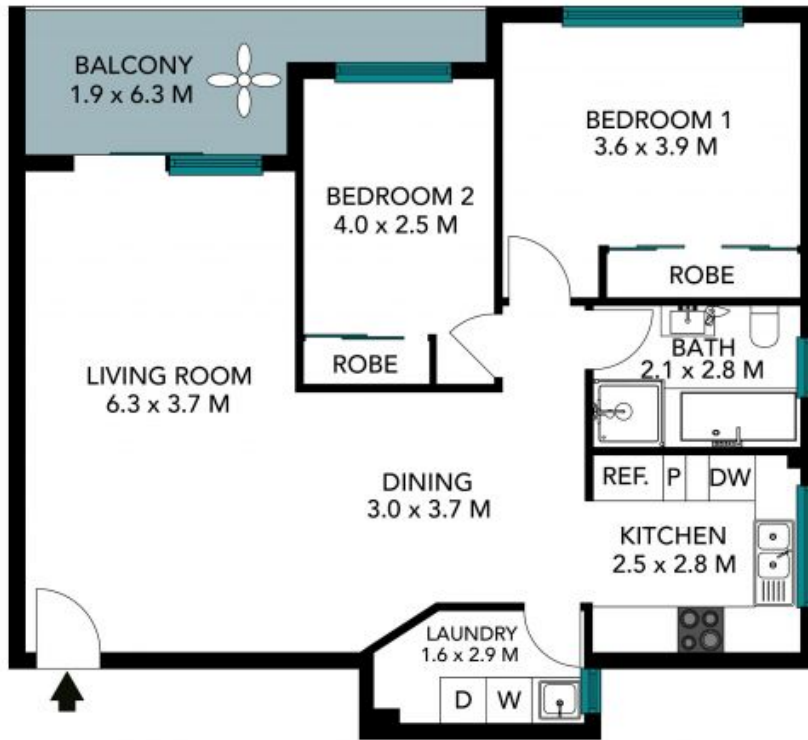
**Rhys Christofa**

0415 684 877



**Lisa Hale**

0417 418 250



The floor plan is not to scale, measurements are indicative and in metres. Exterior elements are not in position. Plans should not be relied on. Interested parties should make and rely on their own enquiries. All other information provided has been collected from reliable sources but cannot be guaranteed for accuracy.

14/614 Princes Highway, Kirrawee





The floor plan is not to scale, measurements are indicative and in metres. All features included in this 3D plan are for inspiration purposes only. This is not an exact replica of the property or the position of exterior elements. Plans should not be relied on. Interested parties should make and rely on their own enquiries.

14/614 Princes Highway, Kirrawee

