



13/1187 Gold Coast Highway Palm Beach, QLD



Revitalised beachside beauty overlooking the ocean

Promising you that year-round holiday feel, this fully renovated apartment captures sweeping ocean views and is perfectly designed to provide exceptional comfort. The stunning light washed interiors flow to the sea breeze balcony and offer an idyllic indoor/outdoor lifestyle. Set on level four 'Villa Marina', is metres from the beach, surf, coffee shops and restaurants.

- Superbly presented open plan living/dining room includes new flooring
- Intimate sun soaked alfresco retreat to enjoy bird's-eye outlook to the water
- Sleek contemporary kitchen complete with Omega oven and cooktop, LED lighting
- Sublime bedrooms have ceiling fans, built-ins, master adjoins designer ensuite
- Beautifully refurbished bathroom, separate European style laundry facilities
- Venetian plaster feature walls, intercom, air conditioning system replaced
- Shared pool and tennis court in secure building, lift, allocated parking space
- Access to Jefferson Lane, walk along shore to Currumbin Creek and surf clubs

Price: \$675,000



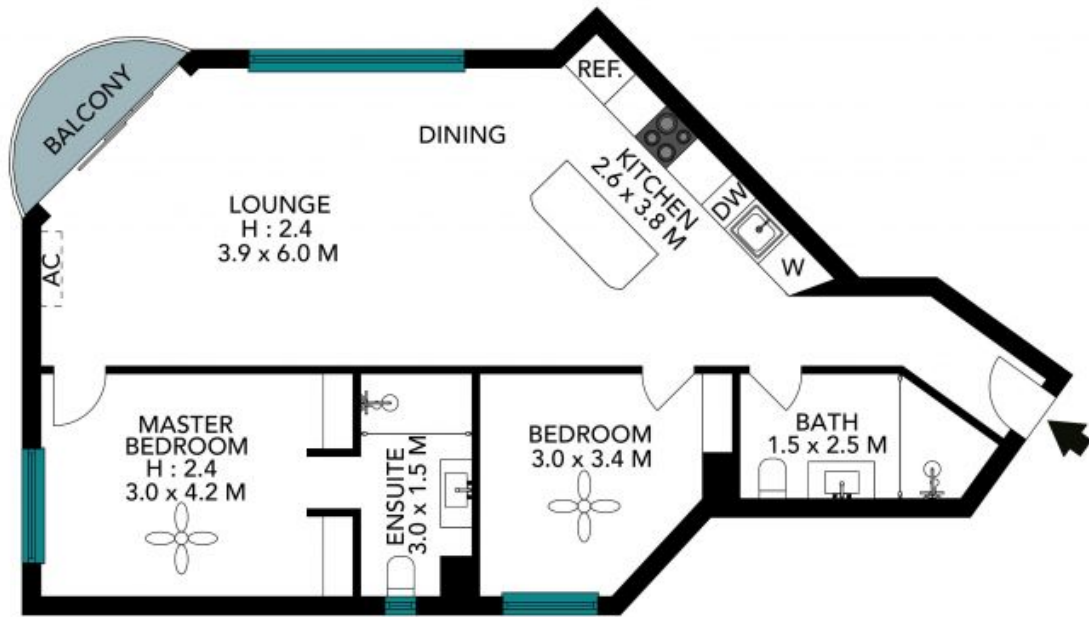
Brendan Andrews

0417 788 882



Tracy McCarthy

0425 879 441



Internal Living: 82 sqm approx
 External Living: 2 sqm approx
 Total Living Area: 84 sqm approx

The floor plan is not to scale, measurements are indicative and in metres. Exterior elements are not in position. Plans should not be relied on. Interested parties should make and rely on their own enquiries. All other information provided has been collected from reliable sources but cannot be guaranteed for accuracy.



13/1187 Gold Coast Highway, Palm Beach





Internal Living: 82 sqm approx
External Living: 2 sqm approx
Total Living Area: 84 sqm approx

The floor plan is not to scale, measurements are indicative and in metres. All features included in this 3D plan are for inspiration purposes only. This is not an exact replica of the property or the position of exterior elements. Plans should not be relied on. Interested parties should make and rely on their own enquiries.

13/1187 Gold Coast Highway, Palm Beach



STONE