

15 Montreal Avenue Killara, NSW



### North to rear in prized Jinkers Green location

Enjoying a sundrenched north to rear aspect opposite Jinkers Green, this charming full brick single level cottage showcases superb live-in-now comfort with the opportunity to build your dream home in the future (stca). Chatswood/North Ryde buses and Beaumont Road Primary School at the end of the street. In Killara High School zone.

Price:

Contact Agent



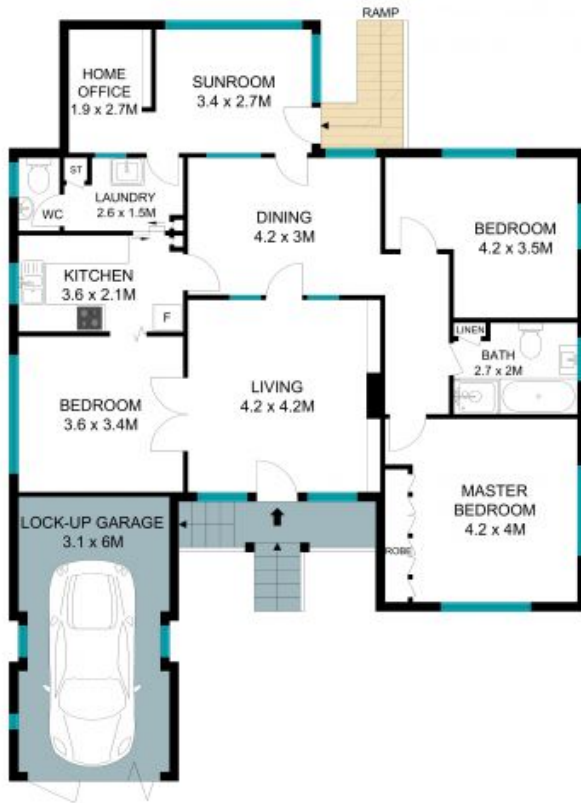
**Steven Kourdis**

0402 555 675



**Ryan Woo**

0410 884 680



SITEPLAN



The site and floor plan are not to scale; measurements are indicative in meters. Paths and trees are placed for illustrative purposes. Plans should not be relied on. Interested parties should make and rely on their own inquiries. All other information provided has been collected from reliable sources but cannot be guaranteed for accuracy.

15 Montreal Avenue, Killara





The site plan and floor plan are not to scale, measurements are indicative in meters. Bushes and trees are placed for illustration purposes. Plans should not be relied on, interested parties should make and rely on their own inquiries. All other information provided has been collected from reliable sources but cannot be guaranteed for accuracy.

15 Montreal Avenue, Killara

