



4/260 New Canterbury Road Lewisham, NSW



Style, size & panoramic views from a peaceful rear setting

Showcasing all the highlights of a spacious apartment lifestyle with an elevated panorama that stretches towards Botany Bay, this oversized residence is immediately impressive. It offers a great opportunity to own a fresh and bright living space, with one-bedroom plus a study, that is quietly tucked away to the rear of a small boutique complex. Step out the front door and it's easy walking distance to Summer Hill and Petersham shops, with bus transport at the front door and train and light rail stations just moments away.

Price: Contact Agent
Council Rates: \$331.00 p/q
Water Rates: \$166.86 p/q
Strata Rates: \$1,964.02 p/q



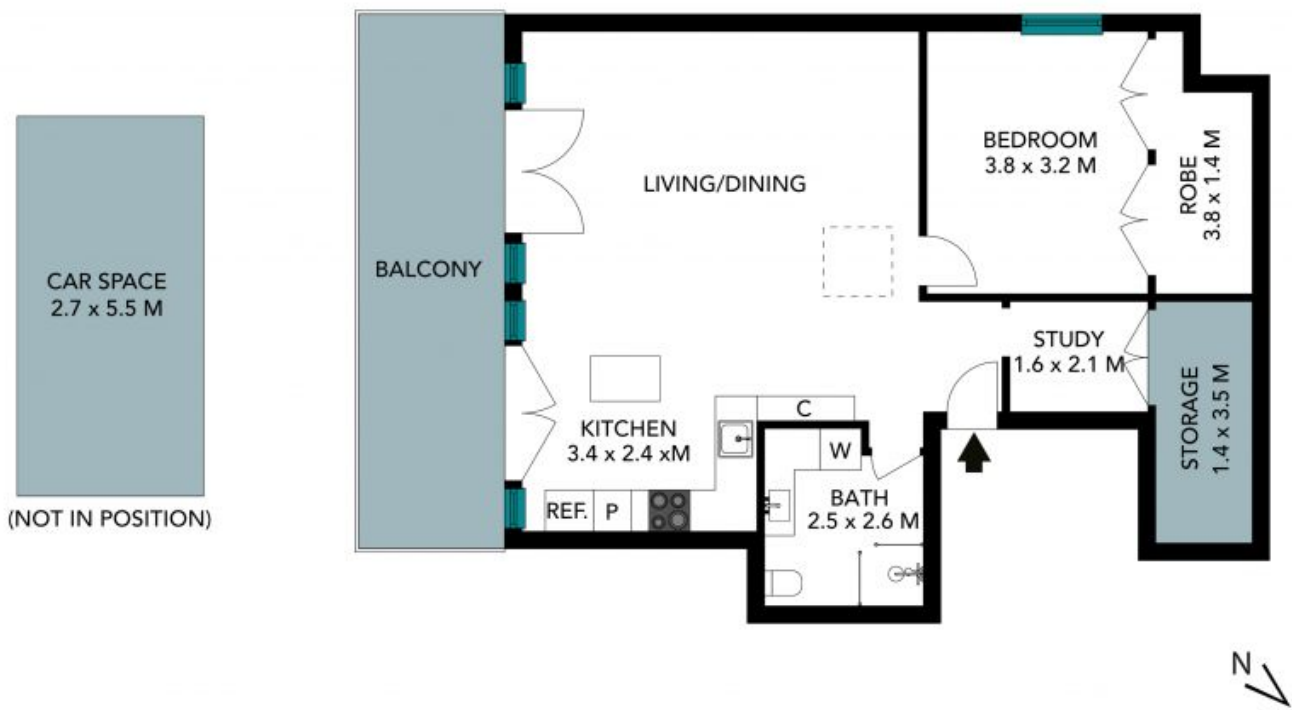
Frederico Fraga-Matos

0450 100 100



Joseph Tropiano

0401 002 211



The floor plan is not to scale, measurements are indicative and in metres. Exterior elements are not in position. Plans should not be relied on. Interested parties should make and rely on their own enquiries. All other information provided has been collected from reliable sources but cannot be guaranteed for accuracy.

4/260 New Canterbury Rd, Lewisham





The floor plan is not to scale, measurements are indicative and in metres. All features included in this 3D plan are for inspiration purposes only. This is not an exact replica of the property or the position of exterior elements. Plans should not be relied on. Interested parties should make and rely on their own enquiries.

4/260 New Canterbury Rd, Lewisham

