

14/231 Pacific Highway Lindfield, NSW



The perfect mix of position & privacy

Embrace a cosmopolitan lifestyle of convenience with this charming and surprisingly spacious, North facing two-bedroom apartment. Light filled interiors and low maintenance allure will appeal to new market entrants, young families, and astute investors. Located on the second floor of a well maintained strata complex, the home is readily comfortable with exceptional scope to update as desired.

Price:

Contact Agent



Andrew Braid

0404 979 597

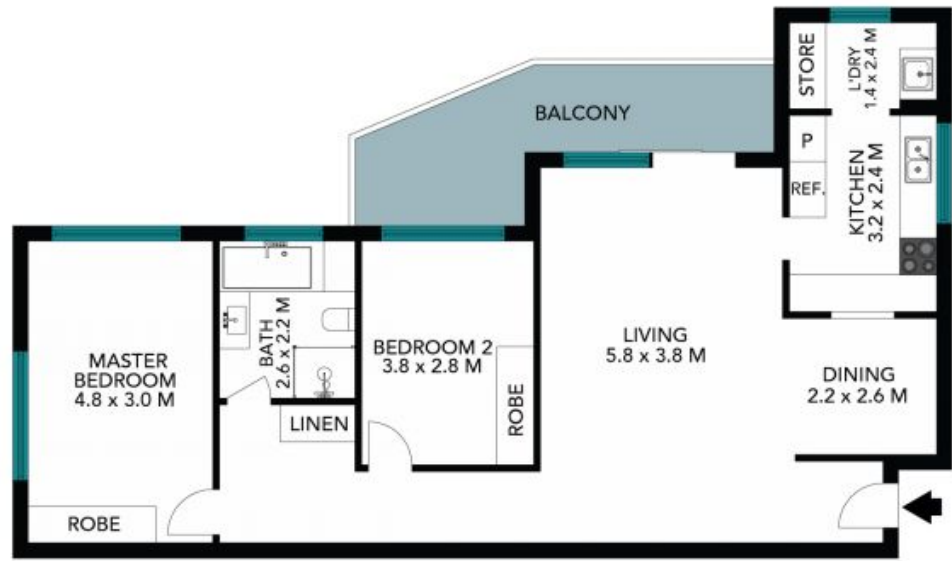


Richard Patterson

0416 228 187



(NOT IN POSITION)



The floor plan is not to scale; measurements are indicative and in metres. Certain elements are not in position. Plans should not be relied on. Interested parties should make and rely on their own enquiries. All other information provided has been collected from reliable sources but cannot be guaranteed for accuracy.

14/231 Pacific Highway
Lindfield

STONE



The floor plan is not to scale; measurements are indicative and in metres. All features included in this 3D plan are for inspiration purposes only. This is not an exact replica of the property or the position of exterior elements. Plans should not be relied on. Interested parties should make and rely on their own enquiries.