



24 Gleneagles Avenue Killara, NSW



Iconic mid-century home to renovate or rebuild

An homage to iconic Pettit and Sevitt style, this meticulously kept, and beautifully intact mid-century home is ripe for renovation or a rebuild (STCA) to achieve your dream home. Spread over a 1081sqm (approx) parcel of land with a 24m (approx.) frontage, it overlooks a backdrop of leafy reserve. The tranquil setting offers outstanding family amenity close to excellent schools, transport and Killara Golf Course.



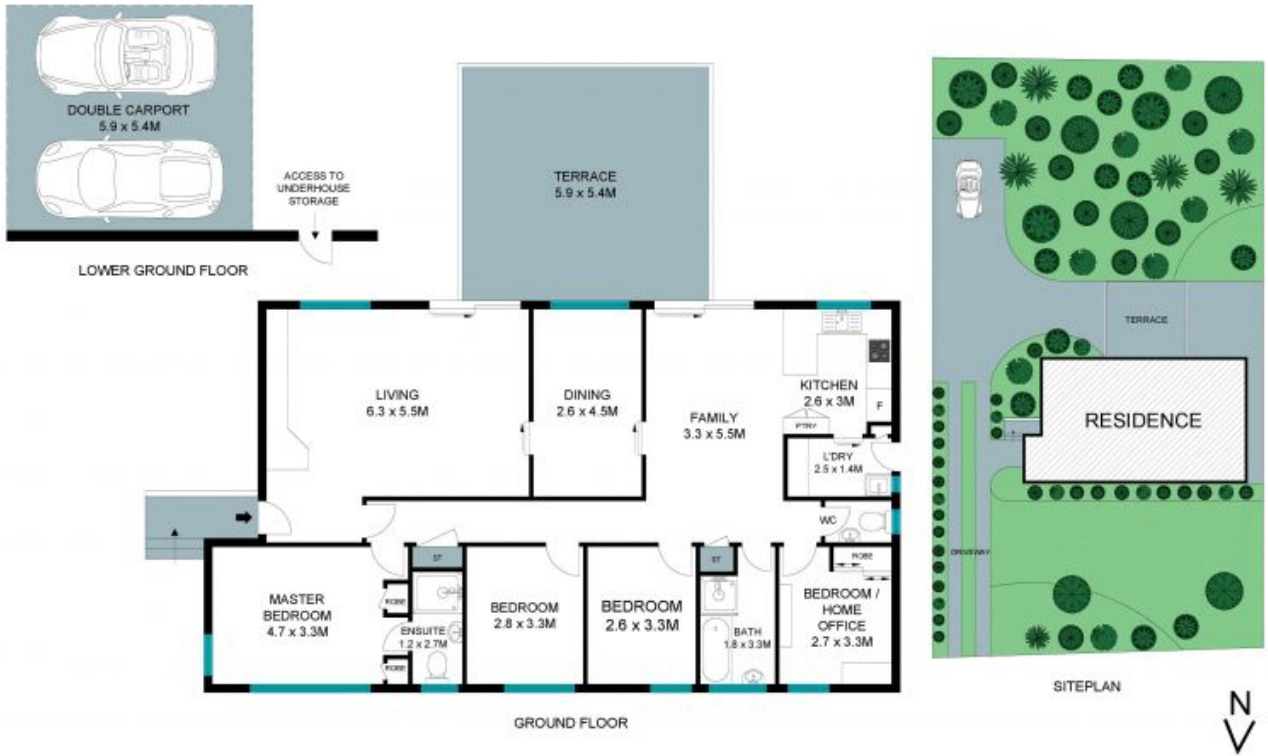
Steven Kourdis

0402 555 675



Ryan Woo

0410 884 680



The site and floor plan are not to scale; measurements are indicative in meters. Gardens and trees are placed for illustrative purposes. Plans should not be relied on. Interested parties should make and rely on their own inquiries. All other information provided has been collected from reliable sources but cannot be guaranteed for accuracy.

24 Gleneagles Avenue, Killara

