



11/92 John Whiteway Drive Gosford, NSW



Luxury apartment with spectacular water views

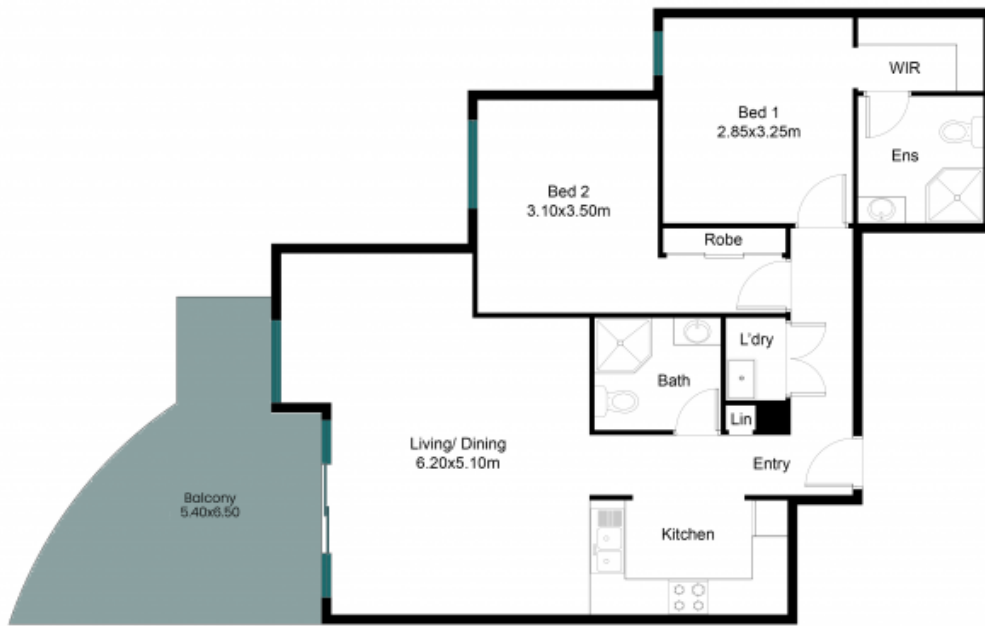
Within minutes walk to Gosford CBD and waterfront, this apartment is perfect for first home buyers and investors alike. This property is presented immaculate with sophisticated finishes. The property boasts:

Price: Contact Agent
Council Rates: \$1,085.00/year (approx)
Water Rates: \$654.16/year (approx)



Adrian Knight

0410 407 188



The site plan and floor plan are not to scale, measurements are indicative and in metres. Bushes and trees are placed for illustration purposes. Plans should not be relied on. Interested parties should make and rely on their own enquiries. All other information provided has been collected from reliable sources but cannot be guaranteed for accuracy.



11/92 John Whiteway Dr, Gosford





The floor plan is not to scale; measurements are indicative and in metres. All features included in this 3D plan are for inspiration purposes only.
This is not an exact replica of the property or the position of exterior elements. Plans should not be relied on. Interested parties should make and rely on their own enquiries.

11/92 John Whiteway Dr, Gosford

