

1B Neptune Place West Pennant Hills, NSW 3 2 2

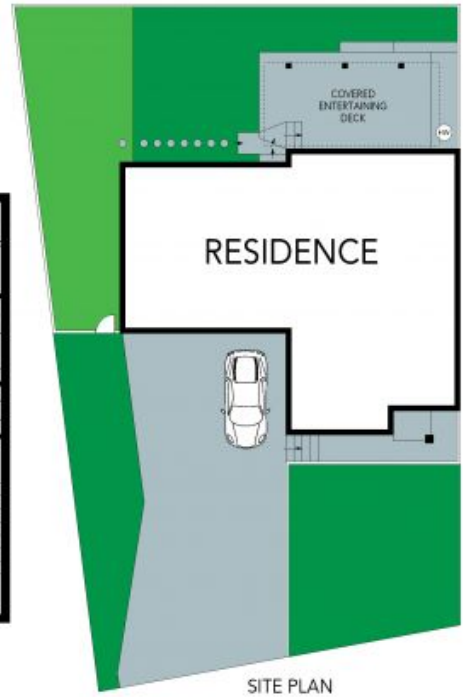
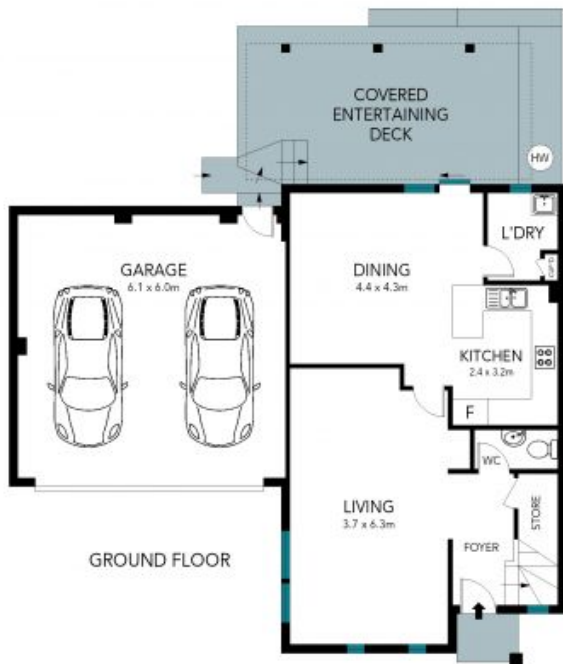
**Peaceful family lifestyle in Murray Farm Public catchment**

Embracing its picturesque natural surrounds, this handsome Torrens title duplex is lushly positioned towards the top of a quiet tree-lined avenue, where access to amenities is equally enticing. It reveals a practical layout abounding in space, sunlight and style, with outstanding convenience in the catchment for Murray Farm Public while only metres from city/Aiken Road buses.

**Price:** Sold Nov 2021 - Contact James Ramsay  
**Council Rates:** ~~320.665~~ 13  
**Water Rates:** \$151.00 p/q



**James Ramsay**  
0420 665 913



The floor plan is not to scale; measurements are indicative and in metres. Exterior elements are not in position. Plans should not be relied on. Interested parties should make and rely on their own enquiries.

1b Neptune Place, West Pennant Hills

