

15 Princes Promenade Seaforth, NSW 4 2 2

Huge 1,353 sqm north-facing block ripe with potential - Enter via Sunset Lane

Occupying a substantial and private 1353sqm parcel with Middle Harbour views, this extraordinary property is absolutely packed with potential. One of the area's few remaining undercapitalised gems, this spectacular block presents a superb opportunity to create a very special home in a blue-ribbon lifestyle setting.

Price: Auction Guide \$4,500,000
Council Rates: \$750.50 p/q
Water Rates: \$150.99 p/q



Maria Cassarino

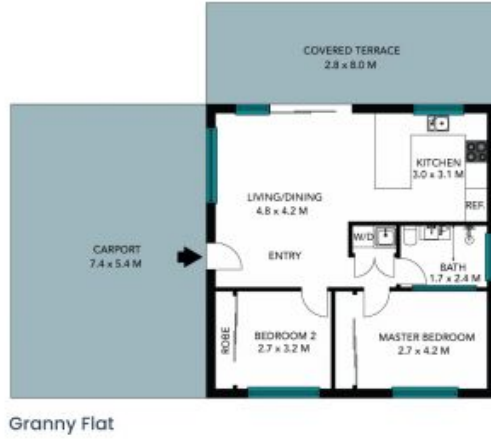
0411 818 093



Lauren Sudol

0438 138 675

15 Princes Promenade
Seaforth



Site Plan

Internal Living: 192 sqm
 External Living: 110 sqm
 Total Living Area: 302 sqm
 Land Size: 1353 sqm



The site plan and floor plan are not to scale; measurements are indicative and in metres. Bushes and trees are placed for illustration purposes. Plans should not be relied on. Interested parties should make and rely on their own enquiries. All other information provided has been collected from reliable sources but cannot be guaranteed for accuracy.

15 Princes Promenade
Seaforth



Main Residence



Granny Flat

Internal Living: 192 sqm
External Living: 110 sqm
Total Living Area: 302 sqm
Land Size: 1353 sqm



The floor plan is not to scale; measurements are indicative and in metres. All features included in this 3D plan are for inspiration purposes only. This is not an exact replica of the property or the position of exterior elements. Plans should not be relied on. Interested parties should make and rely on their own enquiries.