

67 Ellery Parade Seaforth, NSW

5

5

2

Luxury resort-style living on a grand scale

Sprawling extravagantly over 1220sqm, this magnificent and curvaceous trophy home takes spectacular living and entertaining to another level entirely. Framed by lush tropical gardens and with every conceivable luxury including heated pool, indoor koi pond, sauna and tennis court, this grand residence sparkles against a breathtaking Middle Harbour and city skyline backdrop.

Price: \$7,018,000
Council Rates: \$1,147.90 p/q
Water Rates: \$150.99 p/q



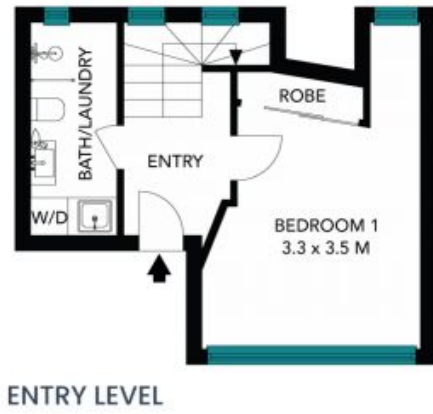
Maria Cassarino

0411 818 093



Lauren Sudol

0438 138 675



The site plan and floor plan are not to scale; measurements are indicative and in metres. Bushes and trees are placed for illustration purposes. Plans should not be relied on. Interested parties should make and rely on their own enquiries. All other information provided has been collected from reliable sources but cannot be guaranteed for accuracy.

10/1 Shepherd Street
Chippendale



The floor plan is not to scale, measurements are indicative and in metres. All features included in this 3D plan are for inspiration purposes only. This is not an exact replica of the property or the position of exterior elements. Plans should not be relied on. Interested parties should make and rely on their own enquiries.