

244 Pittwater Road Manly, NSW

5 

4 

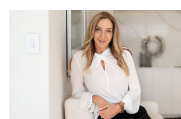
3 

Versatile family living in prime beachside location

Ingeniously configured with options to form one large family residence or to incorporate a separate self-contained retreat, this bright and modern dual level residence offers a haven of seamless functionality and versatility for the changing needs of today's modern families. Placed on 379.4sqm with near level easycare gardens and a sunny north rear aspect, it is superbly located within footsteps of shops, restaurants, cafes and transport, and a level four minute stroll to Queenscliff Beach.

Price:

Contact Agent



Vicki Lamb

0452 431 344



Adam Moore

0428 319 096

244 Pittwater Road
Manly



Site Plan



First Floor



Ground Floor



The site plan and floor plan are not to scale; measurements are indicative and in metres. Bushes and trees are placed for illustration purposes. Plans should not be relied on. Interested parties should make and rely on their own enquiries. All other information provided has been collected from reliable sources but cannot be guaranteed for accuracy.

244 Pittwater Road
Manly



First Floor



Ground Floor



The floor plan is not to scale; measurements are indicative and in metres. All features included in this 3D plan are for inspiration purposes only. This is not an exact replica of the property or the position of exterior elements. Plans should not be relied on. Interested parties should make and rely on their own enquiries.