

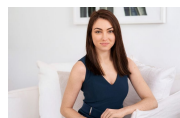
2.306/18 Hannah Street Beecroft, NSW



One bedroom luxury apartment in ultra convenient location

Modern and spacious, the 'Beecroft Place' residence is located in the heart of the suburb. Literally moments from shops, cafe's, city buses and Beecroft Station.

Price: Deposit Taken - \$460 per week
Bond: \$1,840
Available Date: 01/11/2021



Sarah Hastings

02 8893 2218