



13 Bottlebrush Street Mount Annan, NSW 4 1 2 2

### Spacious Living

Mount Annan is the ideal place to live particularly for families. There's so much convenience right at your fingertips. Whether you're taking your dog for a walk around the botanical gardens, or the kids down to the leisure centre for a swim, you will love the convenience that Mount Annan has to offer.

**Price:** \$1,185,000



**Peter Salisbury**

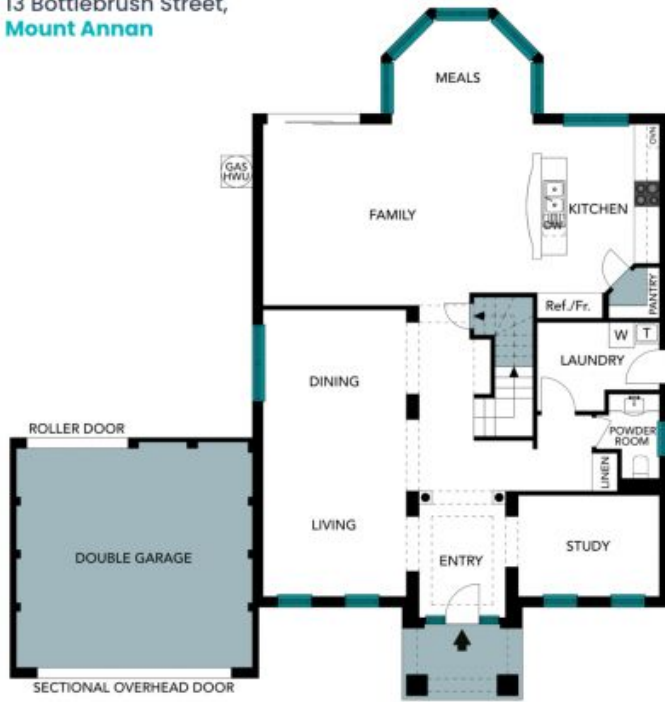
0457 777 517



**Peter Salisbury**

0457 777 517

13 Bottlebrush Street,  
Mount Annan



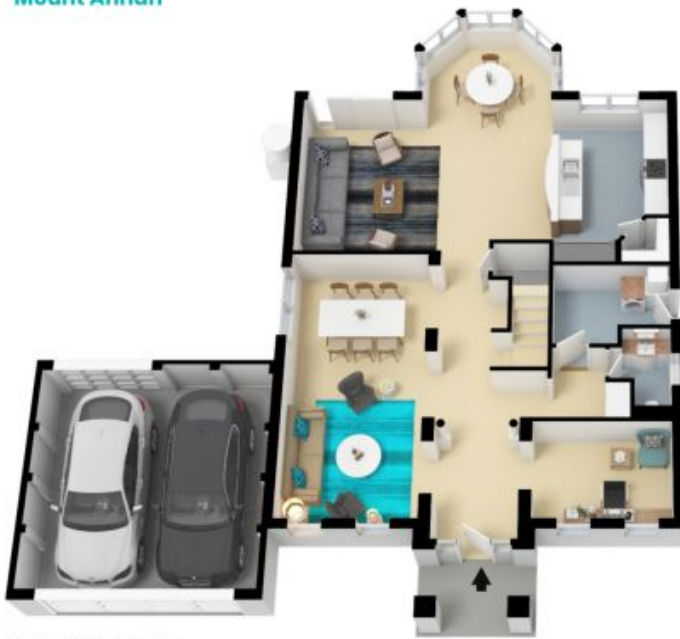
GROUND FLOOR



FIRST FLOOR

The floor plan is not to scale, measurements are indicative and in metres. Exterior elements are not in position. Plans should not be relied on, interested parties should make and rely on their own enquiries. All other information provided has been collected from reliable sources but cannot be guaranteed for accuracy.

13 Bottlebrush Street,  
Mount Annan



GROUND FLOOR



FIRST FLOOR

The floor plan is not to scale; measurements are indicative and in metres. All features included in this 3D plan are for inspiration purposes only. This is not an exact replica of the property or the position of exterior elements. Plans should not be relied on. Interested parties should make and rely on their own enquiries.