



6 Currawang Street Carss Park, NSW



### Easy living with a family-friendly focus - Enter via Benwerrin Avenue

Poised for immediate occupation, this full brick residence offers a relaxed family lifestyle of privacy, light and convenience. Perfect for those looking for a peaceful and easy-to-maintain sanctuary, the double-storey haven showcases effortless indoor/outdoor integration complete with bright contemporary interiors and superb outdoor entertaining. Complemented by a great neighborhood setting, it is well placed within reach of Carss Bush Park and the waterfront at Kogarah Bay.

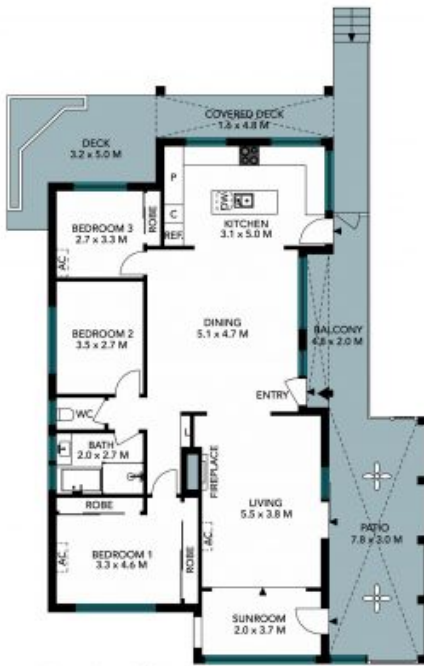
Price:

SOLD | Ray Fadel



**Ray Fadel**

0413 177 739



Upper Ground Floor



Lower Ground Floor



Site Plan



The site plan and floor plan are not to scale; measurements are indicative and in metres. Bushes and trees are placed for illustration purposes. Plans should not be relied on. Interested parties should make and rely on their own enquiries. All other information provided has been collected from reliable sources but cannot be guaranteed for accuracy.



The floor plan is not to scale; measurements are indicative and in metres. All features included in this 3D plan are for inspiration purposes only. This is not an exact replica of the property or the position of exterior elements. Plans should not be relied on. Interested parties should make and rely on their own enquiries.