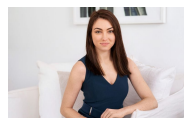


1.301/18 Hannah Street Beecroft, NSW 1 1 1

Luxury Apartment in Beecroft Place

Start in style and be the first to enjoy all the luxury and lifestyle benefits of the spectacular 'Beecroft Place' development. This smartly appointed residence is ideally suited to those seeking a quality low maintenance home in a convenient location.

Price: Deposit Taken!
Bond: \$1,840
Available Date: 03/11/2021



Sarah Hastings

02 8893 2218



The floor plan is not to scale. Measurements are indicative and in metres.



1.301/18 Hannah St, Beecroft
stonerealestate.com.au

Produced by DIAKRIT



The interior style and design of this floor plan is designed for inspiration purposes to show the living spaces. It is not an exact replica of the furniture and fittings in the home.



1.301/18 Hannah St, Beecroft
stonerealestate.com.au

Produced by DIAKRIT