

67 Shellharbour Road Port Kembla, NSW 3 1 2

Updated family home in a quiet cul-de-sac

Recently updated with potential to further personalise or re-develop (STCA), this classic family home presents a superb opportunity for first homebuyers or investors. Perched on the high side of the street overlooking Lake Illawarra, the generous single storey layout is framed by established gardens. It is nestled in a quiet cul-de-sac, short distance to Port Kembla Beach, Warrawong Shopping and a 10 minute drive away from Wollongong CBD.

Price: \$805,000



Neil Webster

0439 028 748

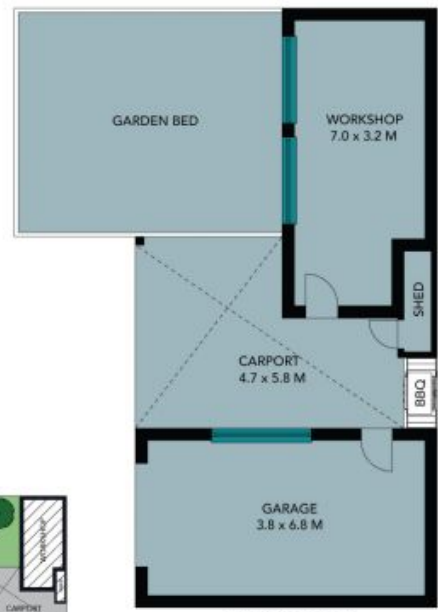


Darnell Haselau

0426 400 240

67 Shellharbour Road
Port Kembla

STONE



Site Plan

The site plan and floor plan are not to scale; measurements are indicative and in metres. Bushes and trees are placed for illustration purposes. Plans should not be relied on. Interested parties should make and rely on their own enquiries. All other information provided has been collected from reliable sources but cannot be guaranteed for accuracy.

67 Shellharbour Road
Port Kembla

STONE



The floor plan is not to scale; measurements are indicative and in metres. All features included in this 3D plan are for inspiration purposes only. This is not an exact replica of the property or the position of exterior elements. Plans should not be relied on. Interested parties should make and rely on their own enquiries.