

9/502-512 Victoria Road Rydalmere, NSW

3 2 2

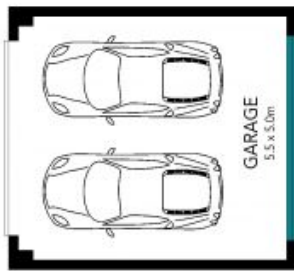
Spacious townhouse in sun-drenched setting

Polished timber floors flow over three levels of superbly presented living space in this home that capitalises on a north facing aspect to create a pocket of tranquillity in a vibrant precinct. This tiered floorplan offers the flexibility to tailor distinct areas to create the ideal combination of entertainment expanse and secluded places to relax, study or work from home.

Price: Sold March 2022 Contact James Ramsay
Council Rates: ~~\$220.665 p/q~~ \$13
Water Rates: \$151.00 p/q
Strata Rates: \$557.69 p/q



James Ramsay
0420 665 913



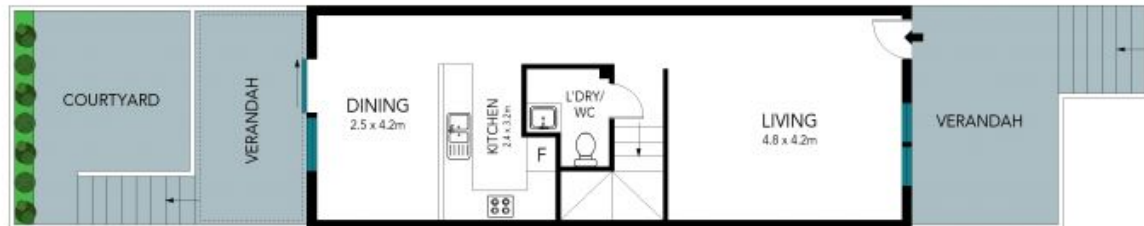
BASEMENT



SECOND LEVEL



FIRST LEVEL



GROUND LEVEL

The floor plan is not to scale; measurements are indicative and in metres. Exterior elements are not in position. Plans should not be relied on. Interested parties should make and rely on their own enquiries.



9/502-512 Victoria Road, West Rydalmere

