



31 Gleason Street McDowall, QLD 3 2 2

Bushland Paradise

This beautifully renovated family home is set on an elevated block overlooking bushland, located in a quiet and peaceful street only minutes' walk from the bushland reserve, McDowall State School and public transport options. Offering room for the extended family and a massive backyard this home will fulfil all the family's needs with ease.

- Master suite/Parents retreat
- Elevated block backing onto bushland
- Beautiful bushland outlook
- Air-conditioned throughout
- 5kw Solar power & gas hot water
- Crimsafe screens on all windows and doors
- Close proximity to parkland, schools, shops and hospitals
- McDowall State School catchment

Bedrooms and relaxation

Price: \$750 per week

Available Date: 23/11/2021



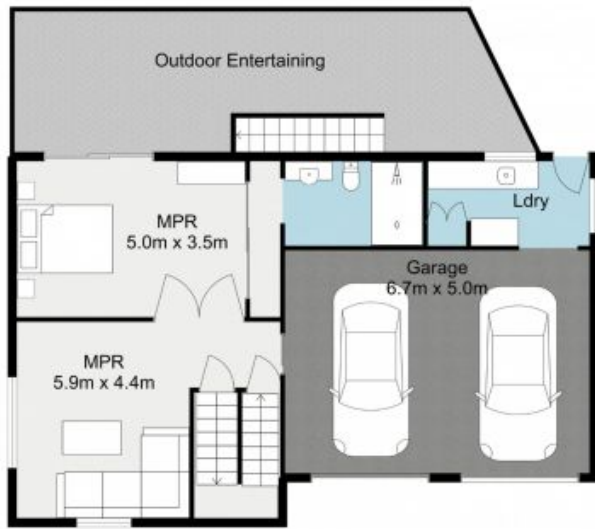
Daniel Higgins

0429 834 059

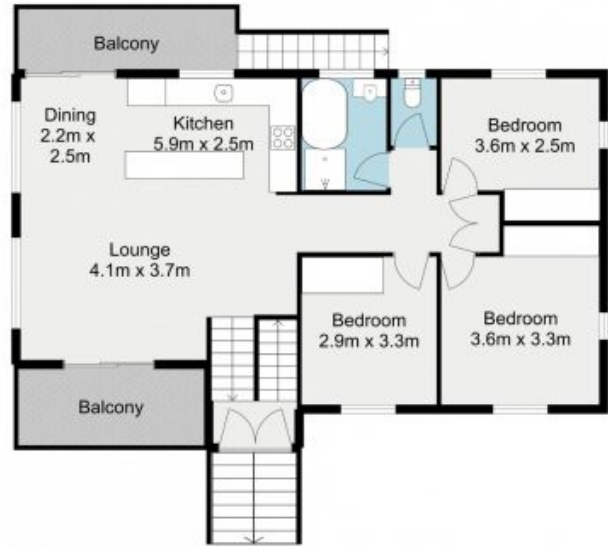


Samantha Rowland

0419 768 335



Level 1



Level 2

The site plan and floorplan are not to scale; measurements are indicative and in metres. Bushes and trees are placed for illustration purposes. Plans should not be relied on. Interested parties should make and rely on their own enquiries.

31 Gleason Street, McDowall

stonespley.com.au